



## Important Information About Electrical System Work in Your Neighborhood

June 2025

Dear Neighbor,

Southern California Edison (SCE), along with crews from our approved contractors, will soon be working on the electrical grid in your neighborhood to make improvements to the electrical grid as part of the Riverside Transmission Reliability Project (RTRP).

This project is being constructed in partnership with Riverside Public Utilities (RPU) to improve Riverside's electric transmission capacity and meet growing energy demands.

### Upgrades in Your Area

Preconstruction activities may begin in May 2025. Project construction work is planned to run continuously from June 2025 through 2028. SCE and contractor crews will be installing new underground structures and cable throughout the City of Jurupa Valley.

### Work Timeline\*

- Dates: Work on the Project will begin June 2025 and will continue through 2028.\*
- Days and times of operation: Monday- Friday, 7:00 AM - 5:00 PM, weekend and nighttime work TBD\*\*

*\* Please be advised that construction will be intermittent and move from one section of the project to another as needed. Dates and times are subject to change due to unforeseen operational factors or inclement weather.*

*\*\* Work hours will vary based on permit conditions.*

### What to Expect

- Crews, surveyors and/or inspectors may need to access the electrical poles and equipment on your property. We will attempt to notify you prior to entering.
- To ensure your safety during construction, there will be road closures, traffic lane, and sidewalk closures. Crew members will use appropriate traffic control signs and flags.
- Crews may need to dig, trim, or remove trees or other plant material to safely access equipment. In addition, upon completion, we will return the area to its previous appearance.
- Although not planned, for crews to work safely, SCE may schedule maintenance power outages during construction. In these cases, we will notify you by phone, text, email, and mail at least 72 hours prior to the outages. Please be sure your contact information is up to date by visiting [sce.com](http://sce.com) and log into your account.

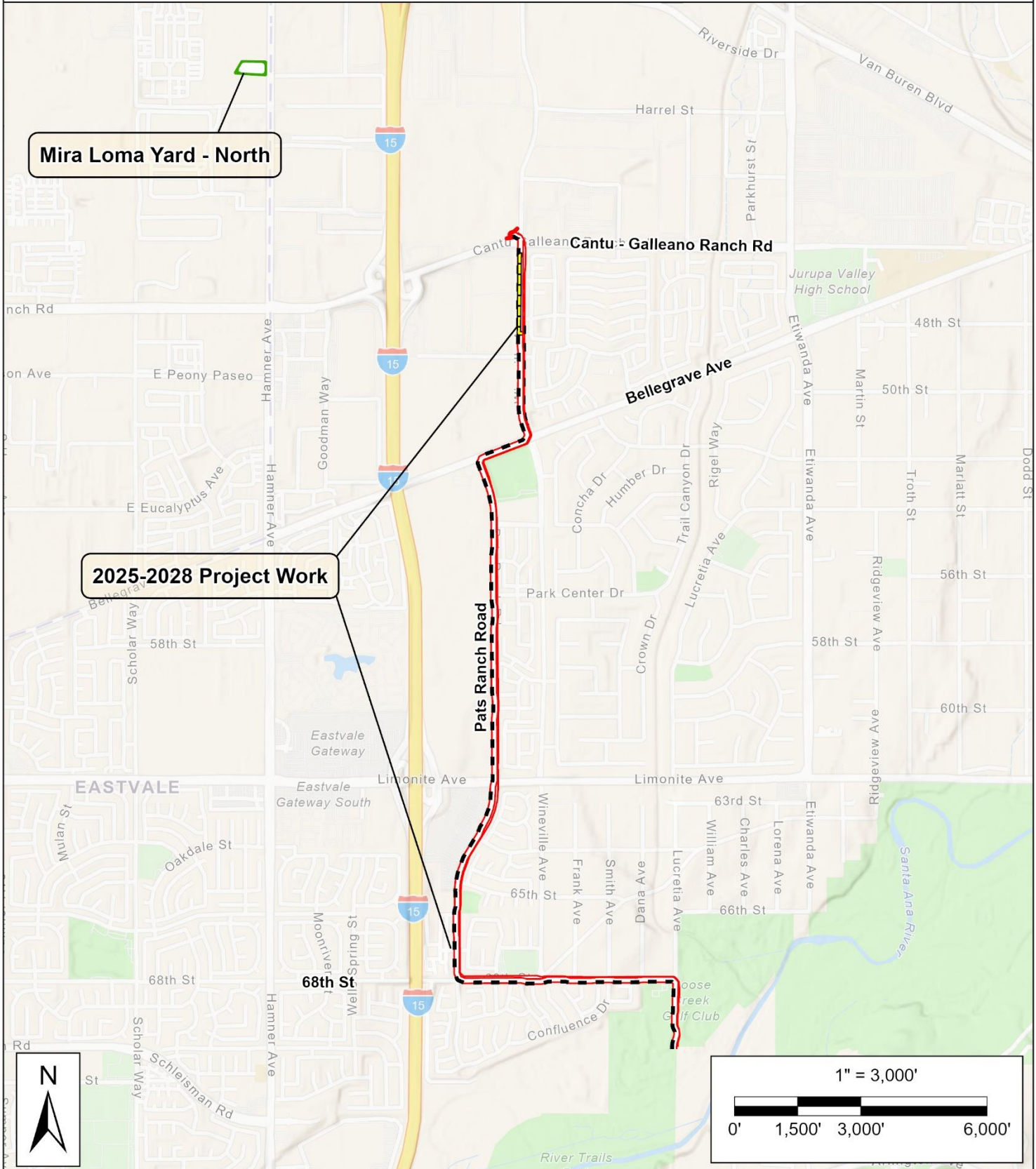
### Project Area

This work will take place in Jurupa Valley within the boundaries identified on the map below:

# Riverside Transmission Reliability Project (RTRP)

## Southern California Edison

### Project Work (2025 - 2028)



### **Noise Reduction Tips**

- Close all windows facing planned construction
- Move beds or desks away from exterior walls closest to the construction
- Run a white noise machine, fan, or air purifier to dampen noise
- Use noise-canceling headphones or earplugs if you're home during loud periods
- Schedule errands, exercise, or outdoor time during peak construction hours

### **Noise Complaint Reporting**

- Please direct all noise complaints to the SCE hotline at (866)-785-7057 ext. 3. SCE will strive to respond within 24 hours, except on weekends.

*\*You can sign up to receive outage alerts using your preferred method of communication via [see.com/outage](http://see.com/outage).*



For additional information on the Riverside Transmission Reliability Project, visit [www.sce.com/rtrp](http://www.sce.com/rtrp) or scan the QR code with your mobile phone.

Para obtener información adicional sobre el Riverside Transmission Reliability Project, visite [www.sce.com/rtrp](http://www.sce.com/rtrp) o escanee el código QR con su teléfono móvil.

For customer service related to this project, please contact 1-866-785-7057 ext. 3.

For emergencies or downed power lines please dial 911.

SCE will provide the latest information about outages at [www.sce.com/outage](http://www.sce.com/outage).