



KEEPING YOUR COMMUNITY SAFE

Preparing for Emergencies and Public Safety Power Shutoffs in High Fire Risk Areas

June 2025

PREPARE FOR WILDFIRE SEASON

The heartbreaking windstorm and wildfires this past January are catastrophic examples of the severe weather risks facing Southern California. These events highlight the importance of our wildfire mitigation plans and continuously enhancing the tools we use to maintain infrastructure resiliency.

We continue to improve and demonstrate our commitment to evolve. We've been investing heavily in undergrounding power lines, coated wires, fast acting fuses, vegetation management and new technologies to reduce the risk of fires caused by utility equipment. These hardening efforts also increase reliability during high winds and storms.

Your safety is our top priority. When fire weather conditions are present, we may temporarily shut off power for a period of time to reduce the risk of a fire caused by utility equipment. This is known as a Public Safety Power Shutoff (PSPS), and it saves lives.

The changing climate, below average rainfall this year and extended periods of high winds increase the potential for a fire to spread. We may need to use PSPS more often to help prevent fires and keep our communities safe.

Losing power for any amount of time is hard, frustrating and disruptive. Our mission is to keep the power on when it is safe to do so. To reduce wildfire risks and help you in planning for emergencies, we are:

- Installing coated wires and moving power lines underground.
- Collaborating with local agencies to clear more vegetation around our infrastructure to prevent contact with electrical equipment.
- Improving our website for better updates during PSPS events.
- Offering rebates for backup batteries and generators.

This newsletter helps you prepare for emergencies and PSPS outages. Make a plan, stay safe and be informed.

A handwritten signature in black ink that reads "Jill C. Anderson".

Jill C. Anderson, SCE Executive Vice President and Chief Operating Officer

WHAT IS A PUBLIC SAFETY POWER SHUTOFF (PSPS)?

A PSPS is when an electric utility temporarily shuts off power to reduce the risk of a wildfire caused by utility equipment. Dangerous fire weather conditions — which include strong winds, dry vegetation and low humidity — drive PSPS events. Sometimes PSPS lasts over 24 hours.

Learn more about PSPS and get answers to frequently asked questions at sce.com/psps.



SIGN UP FOR ALERTS

Alerts are available for anyone.

Before a potential PSPS, we'll send notifications via email, text or phone message. We'll keep you informed during the outage and when power has been restored.

Advance notifications may not be possible in unexpected weather conditions.

Sign up for PSPS alerts in English or other available languages at sce.com/pspsalerts.

EMERGENCY RESOURCES

Essential services and resources are available to help you prepare for an emergency and navigate PSPS events.



PREPARING FOR PSPS

- Have an emergency plan to keep your family safe during any outage. That includes a list of the location of emergency items such as water bottles, battery-operated radio, flashlights, first-aid kits, extra blankets and working batteries.
- Refer to our [latest checklist](#) to prepare for a PSPS outage.
- Bookmark the [outage map](#) or download the MySCE mobile app.



GENERATOR AND BATTERY REBATES

- A free backup battery to help power medical devices during outages is available to customers living in high fire risk areas and enrolled in SCE's [Medical Baseline Allowance program](#).
- Visit the [SCE Marketplace](#) for portable power stations and generators. Receive up to five \$150 rebates for qualifying residential portable power stations and up to \$600 for qualifying portable generators.



CUSTOMER SUPPORT PROGRAMS

- Find resources and support for customers with access and functional needs, as well as community assistance and emergency preparedness information at sce.com/afn.
- If you or someone in your house relies on electricity for health reasons, use [this checklist](#) to prepare and stay safe during PSPS events.
- SCE Community Resource Centers and Community Crew Vehicles are located or dispatched within affected communities to provide essential customer service during PSPS events. CRC and CCV locations are listed on the [outage map](#) during PSPS.
- Hotel discounts during prolonged outages can be found at sce.com/hotel-discounts.

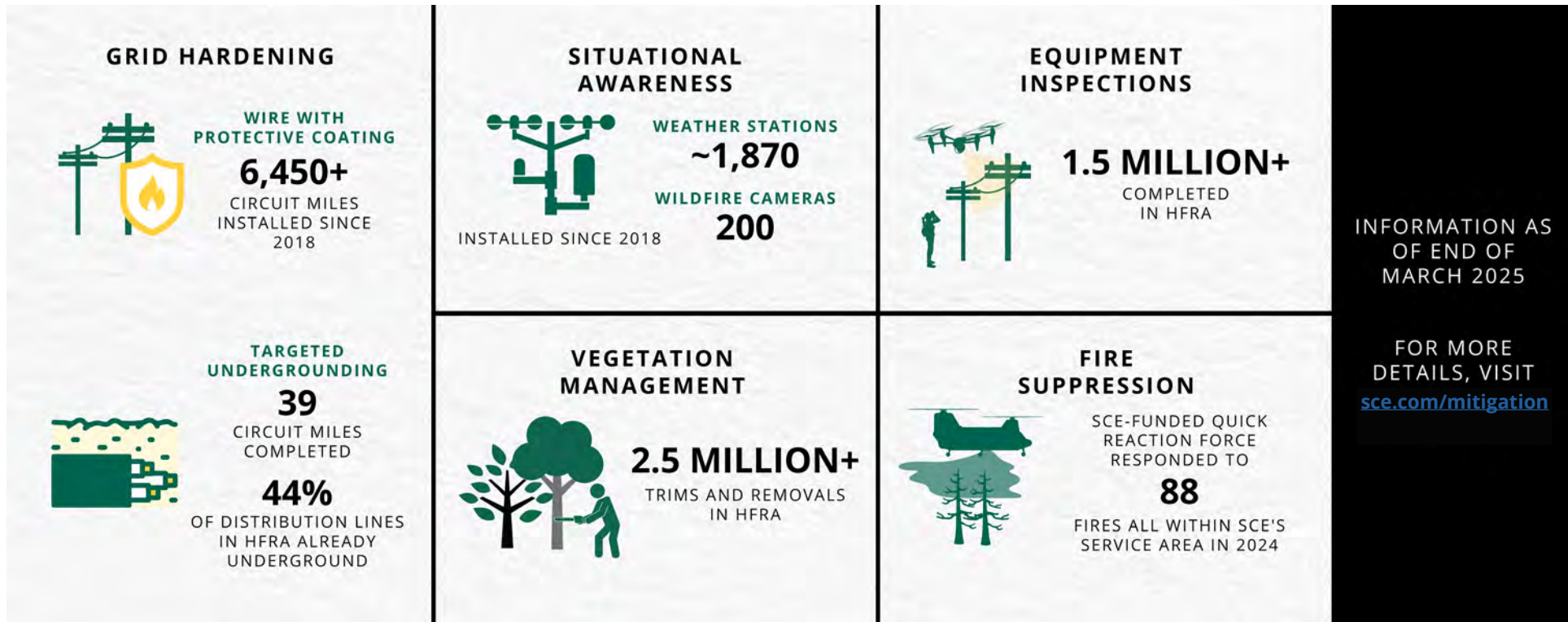


STAY SAFE DURING A POWER OUTAGE

- Never touch or approach a downed power line — stay at least 100 feet away. When safe, call 911 immediately.
- Unplug appliances and electronics to avoid damage or data loss. If you have electric gates or garage doors, learn to operate them manually.
- Gasoline and gas-powered generators should never be used indoors. Generators and batteries should not be connected directly to household circuits without the appropriate safety equipment. Doing either is dangerous for you and repair crews.

REDUCING WILDFIRE RISK

In the last year, we've replaced approximately 800 circuit miles of bare wire with protective coated wires. These coated wires prevent impacts from vegetation blow-ins that could lead to an ignition and reduce interruptions by approximately 70%, making electric service more reliable. By year-end, we expect to reach a major milestone of hardening approximately 90% of our total distribution lines in high fire risk areas.



INFORMATION AS OF END OF MARCH 2025

FOR MORE DETAILS, VISIT sce.com/mitigation



HOW TECHNOLOGY HELPS US MONITOR WEATHER

Our team of in-house experts uses advanced technology to monitor the weather. We utilize over 1,800 weather stations and 200 wildfire cameras across high fire risk areas to monitor real-time conditions and enhance our weather modeling. We also employ supercomputer technology to run more than 100 million fire simulations nightly and provide critical weather forecasts. This information helps forecast areas and times for possible power shutoffs to prevent a wildfire caused by electric equipment.

CONTINUED WILDFIRE PREVENTION

In 2025, we are continuing wildfire mitigation work, including:

- Installing coated wires, moving power lines underground and exploring new technologies in high fire risk areas. These improvements will make the energy grid more resilient and reliable during high winds and storms.
- Tree trimming and vegetation clearance.
- Conducting detailed structure inspections in high fire risk areas.
- Implementing faster grid protection settings to prevent wildfires during high fire conditions.
- Partnering with local fire agencies for an aerial fire suppression program (known as the Quick Reaction Force).

LEARN MORE ABOUT PSPS, NOTIFICATION PREFERENCES AND EMERGENCY PREPAREDNESS AT SCE.COM/PSPS.