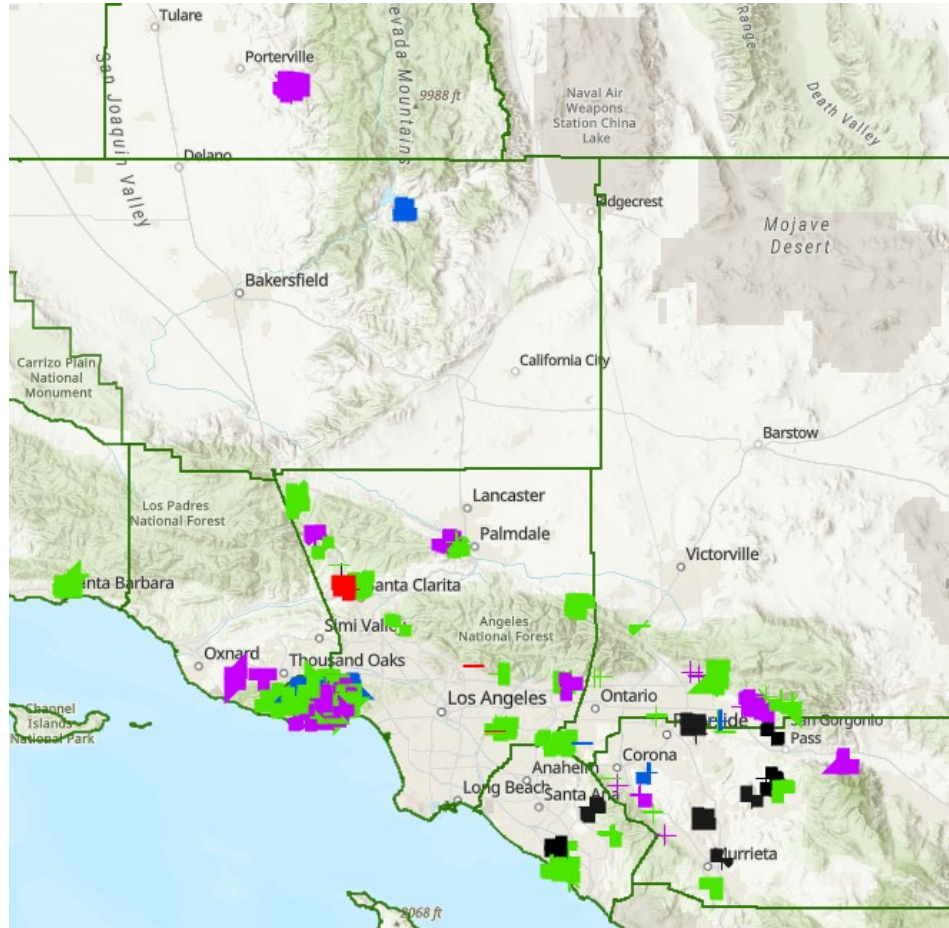


Undergrounding as a Wildfire Mitigation Measure

SCE Service Area



Southern California Edison (SCE) is undergrounding in targeted areas to further reduce wildfire risk and increase reliability within its highest fire risk areas.

Criteria for targeted undergrounding include:

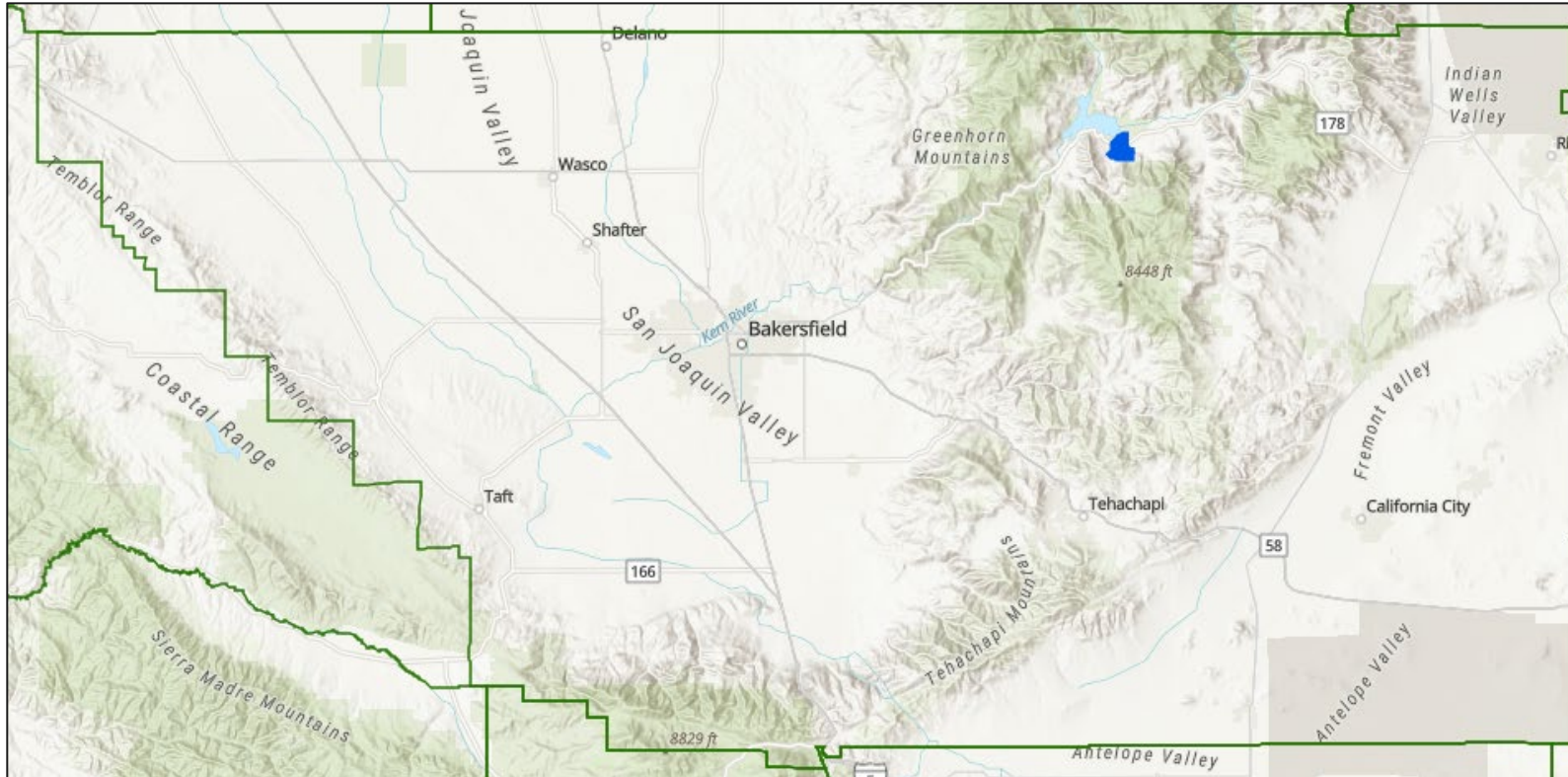
- limited exit and entry points to communities
- high burn frequency
- high wind speeds exceeding covered conductor Public Safety Power Shutoff thresholds
- exceptionally high potential consequence (could burn more than 10,000 acres within 8 hours)
- communities of elevated concern
- operational feasibility


- Completed undergrounding in 2021-2023
- Planned undergrounding in 2024
- Potential undergrounding in 2024-2025 (dependent on feasibility assessment)
- Potential undergrounding in 2026 (dependent on feasibility assessment)
- Potential undergrounding in 2027 (dependent on feasibility assessment)

Data as of 3/20/24. Features depicted herein are intended for informational purposes only. Distances and locations may be distorted at this scale. Planned and potential scope of work is subject to change based on regulatory approvals, feasibility, permitting, and other constraints. If a project is not completed during the year originally identified, it may continue through the following years.

Undergrounding as a Wildfire Mitigation Measure

Kern County

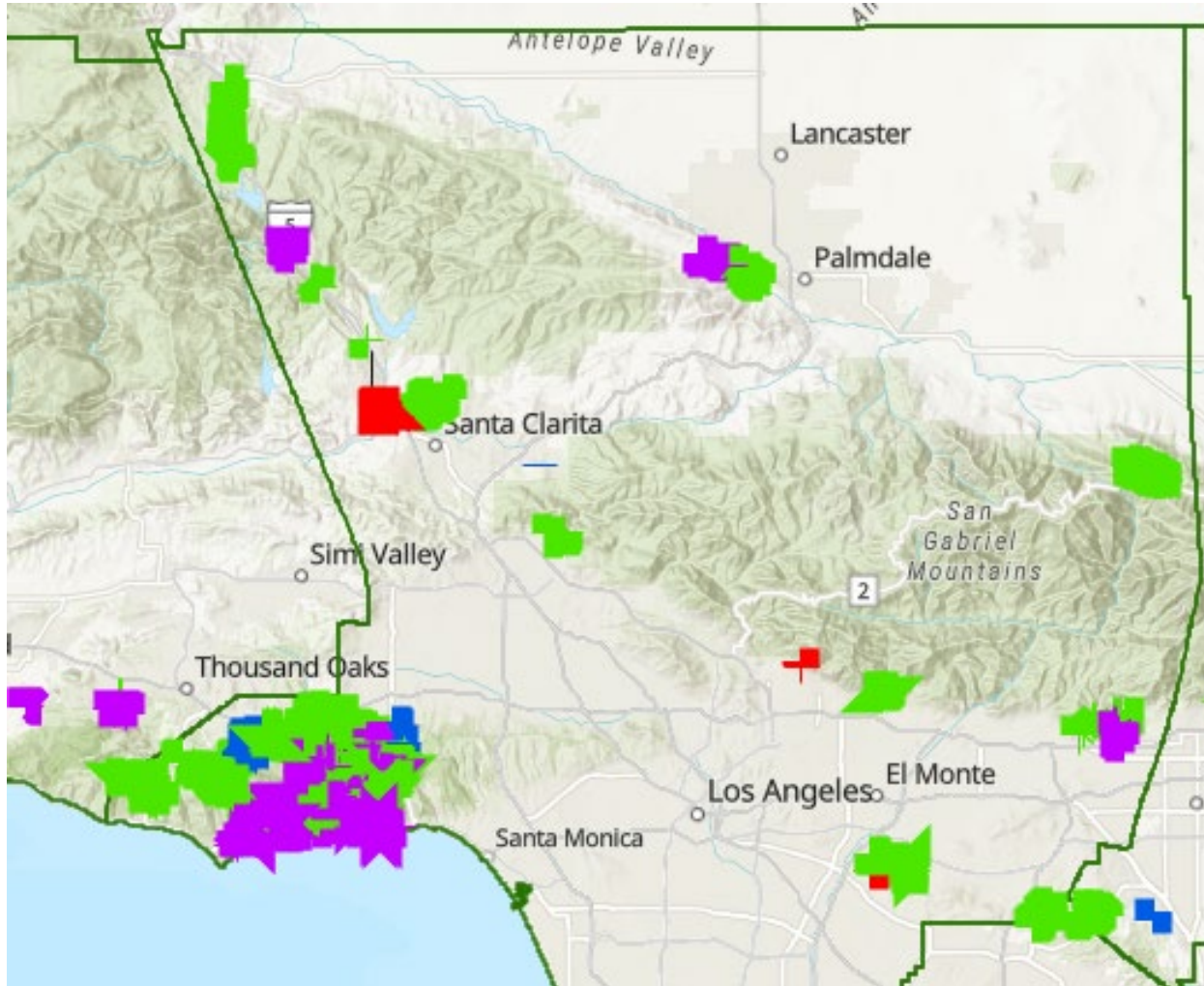


 Planned undergrounding rollover to 2024

Data as of 8/16/23. Features depicted herein are intended for informational purposes only. Distances and locations may be distorted at this scale. Planned and potential scope of work is subject to change based on regulatory approvals, feasibility, permitting, and other constraints. If a project is not completed during the year originally identified, it may continue through the following years.

Undergrounding as a Wildfire Mitigation Measure

Los Angeles County

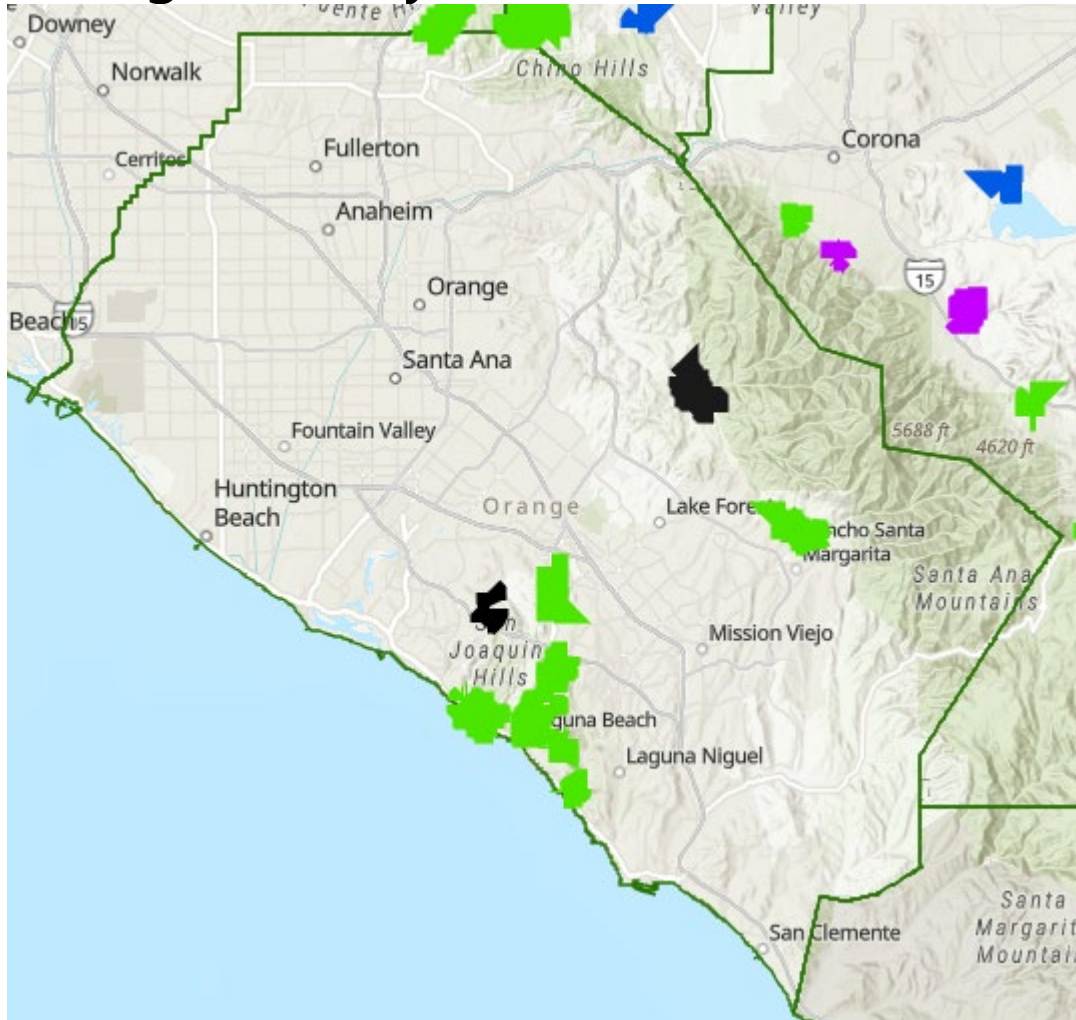


- Completed undergrounding in 2021-2023
- Potential undergrounding rollover to 2024
- Potential undergrounding in 2024-2025 (dependent on feasibility assessment)
- Potential undergrounding in 2026 (dependent on feasibility assessment)
- Potential undergrounding in 2027 (dependent on feasibility assessment)

Data as of 3/20/24. Features depicted herein are intended for informational purposes only. Distances and locations may be distorted at this scale. Planned and potential scope of work is subject to change based on regulatory approvals, feasibility, permitting and other constraints. If a project is not completed during the year originally identified, it may continue through the following years.

Undergrounding as a Wildfire Mitigation Measure

Orange County

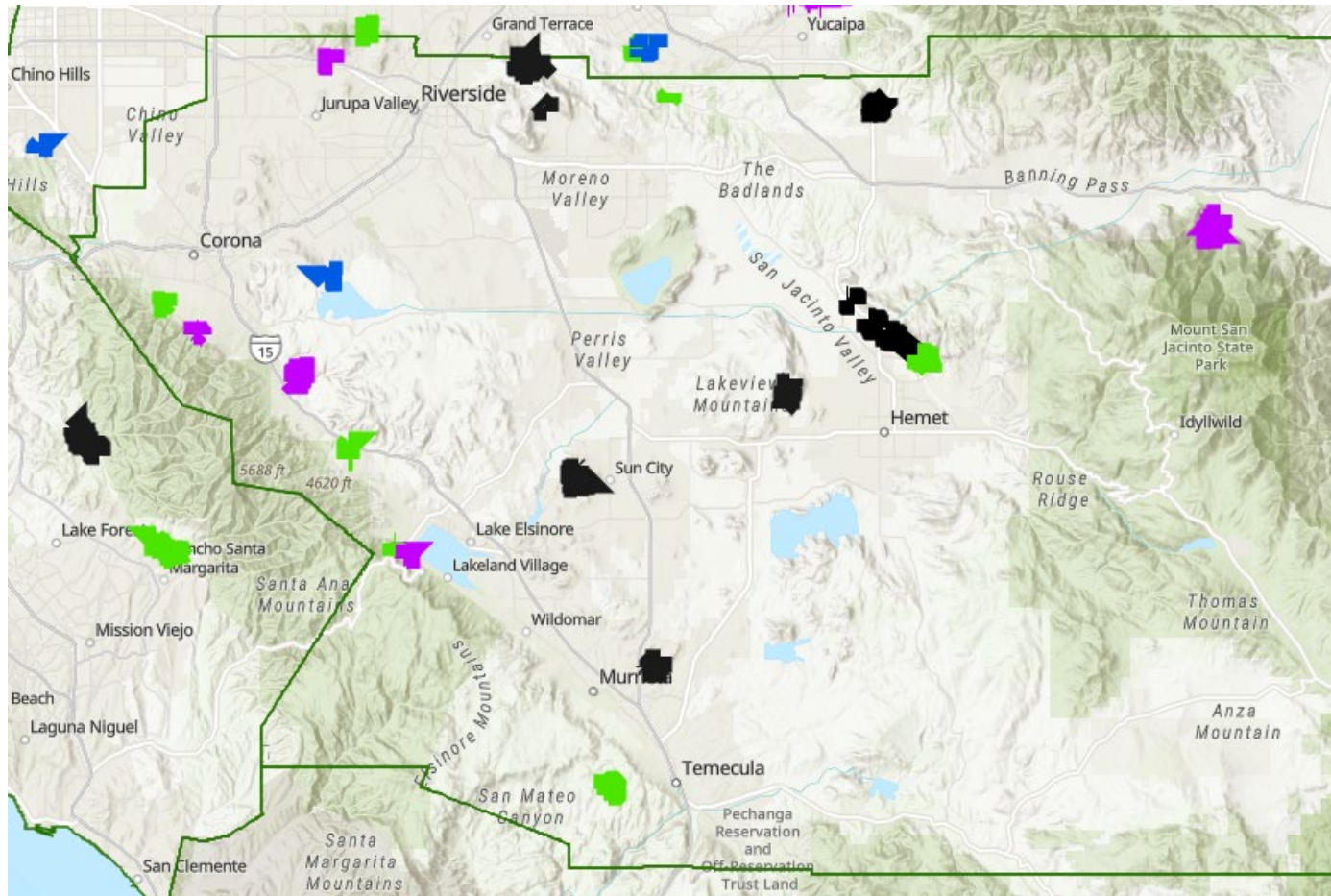


- Completed undergrounding in 2021-2023
- Potential undergrounding rollover to 2024
- Potential undergrounding in 2024-2025 (dependent on feasibility assessment)
- Potential undergrounding in 2026 (dependent on feasibility assessment)
- Potential undergrounding in 2027 (dependent on feasibility assessment)

Data as of 3/20/24. Features depicted herein are intended for informational purposes only. Distances and locations may be distorted at this scale. Planned and potential scope of work is subject to change based on regulatory approvals, feasibility, permitting and other constraints. If a project is not completed during the year originally identified, it may continue through the following years.

Undergrounding as a Wildfire Mitigation Measure

Riverside County

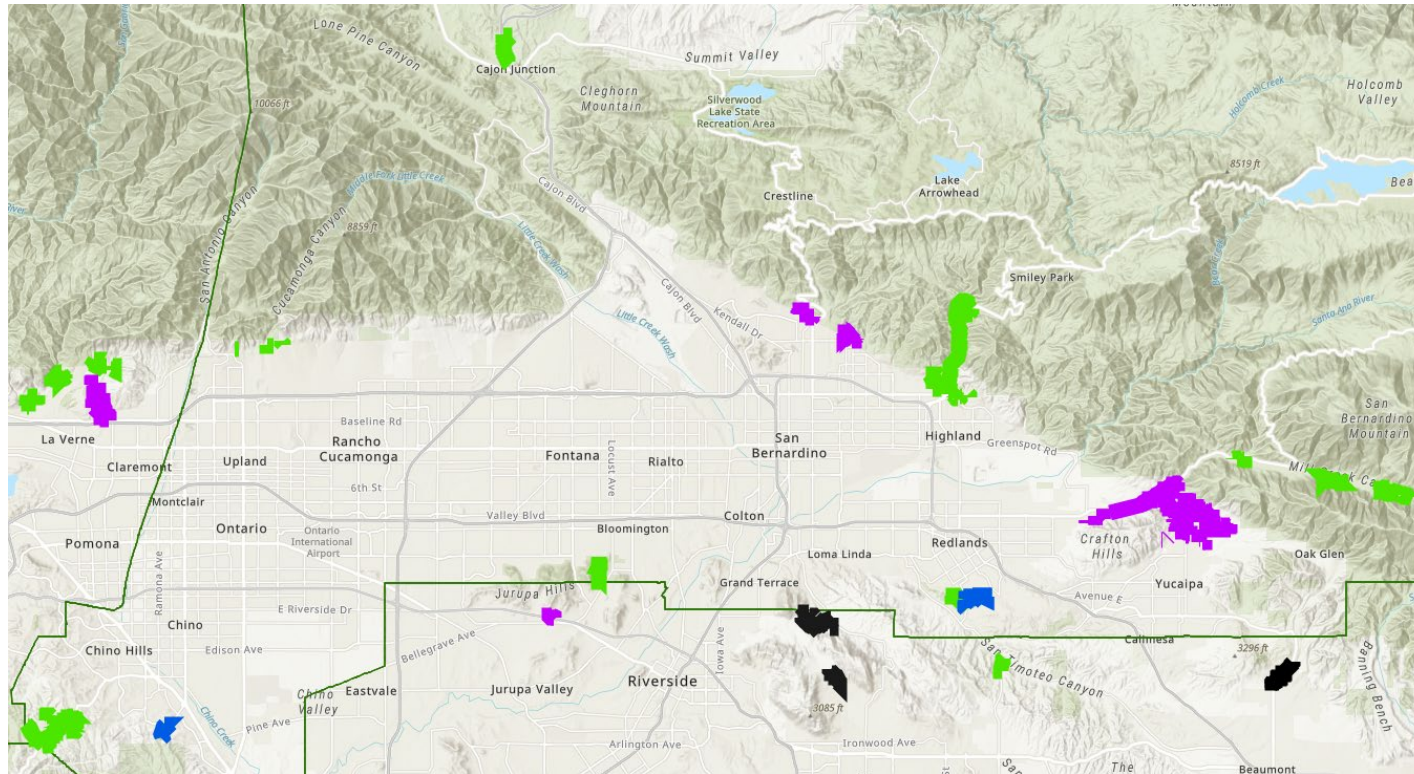


- Completed undergrounding in 2021-2023
- Potential undergrounding rollover to 2024
- Potential undergrounding in 2024-2025 (dependent on feasibility assessment)
- Potential undergrounding in 2026 (dependent on feasibility assessment)
- Potential undergrounding in 2027 (dependent on feasibility assessment)

Data as of 3/20/24. Features depicted herein are intended for informational purposes only. Distances and locations may be distorted at this scale. Planned and potential scope of work is subject to change based on regulatory approvals, feasibility, permitting and other constraints. If a project is not completed during the year originally identified, it may continue through the following years.

Undergrounding as a Wildfire Mitigation Measure

San Bernardino County

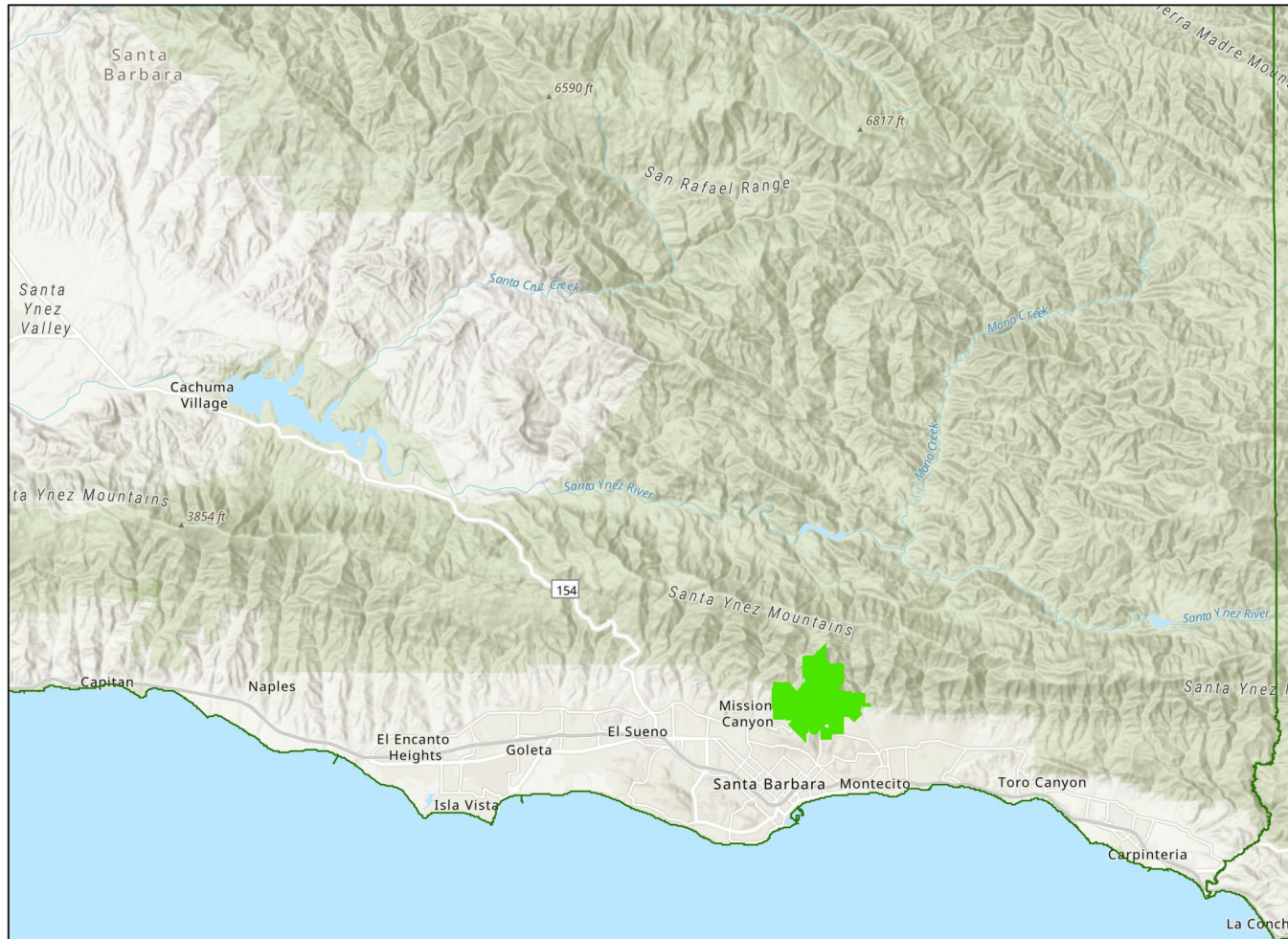


- Completed undergrounding in 2021-2023
- Potential undergrounding rollover to 2024
- Potential undergrounding in 2024-2025 (dependent on feasibility assessment)
- Potential undergrounding in 2026 (dependent on feasibility assessment)
- Potential undergrounding in 2027 (dependent on feasibility assessment)

Data as of 3/20/24. Features depicted herein are intended for informational purposes only. Distances and locations may be distorted at this scale. Planned and potential scope of work is subject to change based on regulatory approvals, feasibility, permitting and other constraints. If a project is not completed during the year originally identified, it may continue through the following years.

Undergrounding as a Wildfire Mitigation Measure

Santa Barbara County

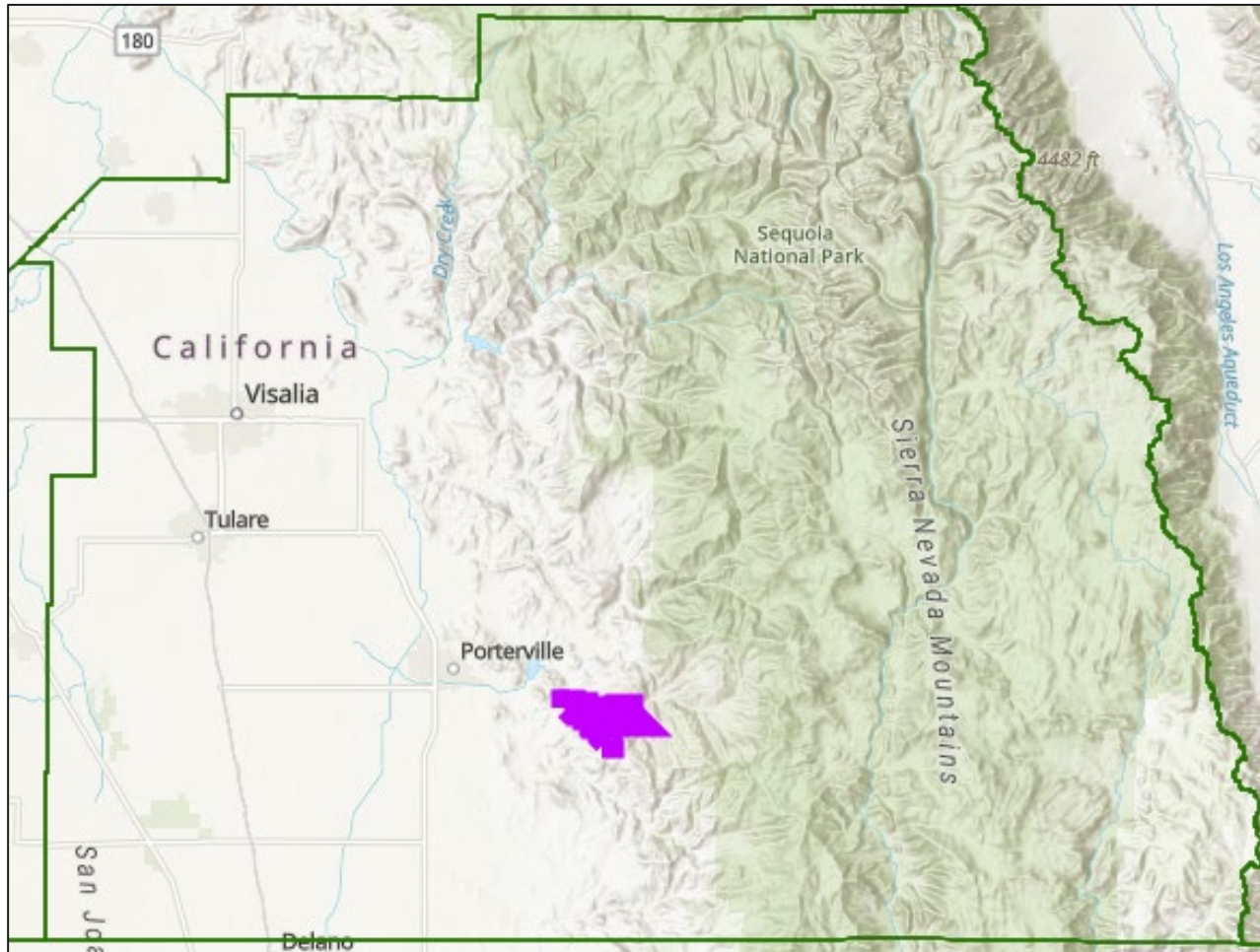


- Completed undergrounding in 2021-2023
- Potential undergrounding rollover to 2024
- Potential undergrounding in 2024-2025 (dependent on feasibility assessment)
- Potential undergrounding in 2026 (dependent on feasibility assessment)
- Potential undergrounding in 2027 (dependent on feasibility assessment)

Data as of 3/20/24. Features depicted herein are intended for informational purposes only. Distances and locations may be distorted at this scale. Planned and potential scope of work is subject to change based on regulatory approvals, feasibility, permitting and other constraints. If a project is not completed during the year originally identified, it may continue through the following years.

Undergrounding as a Wildfire Mitigation Measure

Tulare County

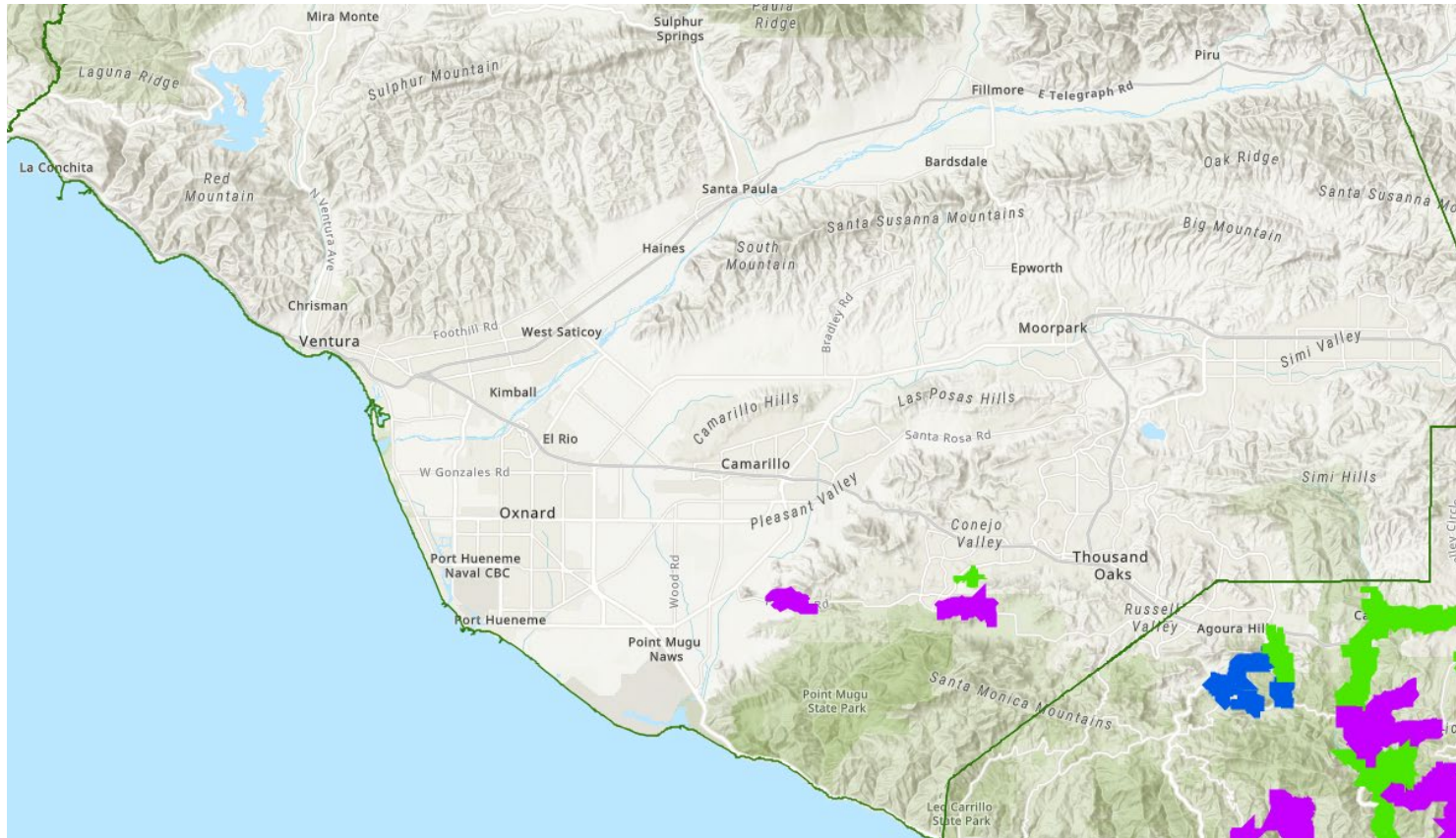


- Completed undergrounding in 2021-2023
- Potential undergrounding rollover to 2024
- Potential undergrounding in 2024-2025 (dependent on feasibility assessment)
- Potential undergrounding in 2026 (dependent on feasibility assessment)
- Potential undergrounding in 2027 (dependent on feasibility assessment)

Data as of 3/20/24. Features depicted herein are intended for informational purposes only. Distances and locations may be distorted at this scale. Planned and potential scope of work is subject to change based on regulatory approvals, feasibility, permitting and other constraints. If a project is not completed during the year originally identified, it may continue through the following years.

Undergrounding as a Wildfire Mitigation Measure

Ventura County



- Completed undergrounding in 2021-2023
- Potential undergrounding rollover to 2024
- Potential undergrounding in 2024-2025 (dependent on feasibility assessment)
- Potential undergrounding in 2026 (dependent on feasibility assessment)
- Potential undergrounding in 2027 (dependent on feasibility assessment)

Data as of 3/20/24. Features depicted herein are intended for informational purposes only. Distances and locations may be distorted at this scale. Planned and potential scope of work is subject to change based on regulatory approvals, feasibility, permitting and other constraints. If a project is not completed during the year originally identified, it may continue through the following years.