

## Earn Financial Incentives Through Demand Response Programs

A key to business success is keeping electricity costs down, especially during the hot summer months – and at SCE, we're committed to helping you do just that.

We offer Demand Response (DR) programs to help you reduce your costs. Your business may **benefit** from temporarily lowering energy usage during high-use or peak times, or from shifting usage to off-peak hours. This, in turn, helps reduce overall electricity demand and alleviate strain on our electric system. You'll not only potentially save money, you'll also help the environment.

The following select DR programs are currently open to new enrollment and offer smart ways to lower your bills through rate discounts, bill credits, and incentives.

- **Automated Demand Response (Auto-DR):** Auto-DR provides equipment control incentives to enable you to participate in DR programs by reducing electricity usage without manual intervention. The controls incentivized by Auto-DR let you preselect your load reduction strategies and automatically respond to DR events for maximum flexibility and ease-of-use. You also can override Auto-DR signals or revise your load reduction strategies when necessary.
- **Critical Peak Pricing (CPP):** CPP is a rate that offers a discount on summer electricity rates in exchange for higher prices during 12 CPP event days per year, usually occurring on the hottest summer days. By reducing your electricity use during CPP events, you can lower your electric costs during the summer season – when your bills are typically the highest.
- **Real-Time Pricing (RTP):** If your business has flexibility around its operating schedule, you may want to consider the RTP rate. This rate schedule is beneficial if you can reduce energy usage during hours with higher temperature-driven prices, and/or shift usage to lower-priced hours. You may want to sign up for RTP courtesy email notifications that alert you of temperature-based price changes.
- **Summer Discount Plan (SDP):** Through SDP, you can receive monthly credits on your summer season bills. SCE installs a small remote-controlled device on or near your central A/C unit(s). The device allows us to turn off or cycle your A/C compressor(s) for up to six hours a day during an SDP event.
- **Capacity Bidding Program (CBP):** This flexible bidding program pays you for reducing energy during events in which energy prices are high, demand reaches critical levels, or supply is limited. You can change your monthly level of participation depending on your business needs. If you take part through a third-party DR aggregator, participation and incentives are managed by the aggregator.
- **Third-Party Demand Response Providers:** Third-party DR providers develop and manage their own DR programs that may be available to you. By partnering directly with businesses, DR providers can pool or aggregate customers under their DR program(s) to achieve energy reductions. Your participation and incentives are managed by the third parties.

For a complete list of SCE's DR programs, a list of third-party DR providers, and to learn how we can work together to help you manage your company's energy use and improve your bottom line, contact your Account Manager or visit [sce.com/drp](https://www.sce.com/drp).

## New Report Highlights Edison International's Sustainability Achievements

*Among other accomplishments, the company reaches nearly 50 percent of its 2045 carbon-free energy goal.*

Edison International, the parent company of SCE, recently published its **2019 Sustainability Report**. This report details our company's achievements toward a sweeping set of measurable goals related to clean energy, transportation electrification, diversity and inclusion, and safety, while emphasizing our commitment to providing customers safe, reliable, affordable, and clean electricity during the COVID-19 pandemic.

The company maintains our dedication to safety for communities, customers, and employees, including carrying out our plan to reduce wildfire risk. SCE is proposing to invest more than \$5 billion each year in the power grid, working to build resiliency against threats such as wildfires.

"Sustainability is central to our vision for leading the transformation of the electric power industry, and we're committed to doing our part to respond to the global challenge of climate change," said Pedro J. Pizarro, president and CEO of Edison International. "While our initial response to COVID-19 has been comprehensive, our long-term sustainability goals underpin our efforts toward a clean energy future and a just and equitable economic recovery. As always, we are committed to safety and to making it our top priority."

As Edison International's largest subsidiary, SCE has cut the emissions from delivered electricity nearly in half since 2005, providing an estimated 48 percent carbon-free electricity to customers in 2019. We also launched Charge Ready Transport, the largest truck and transit charging initiative in the nation, and added infrastructure to support more than 200 new light-duty vehicle charge ports.

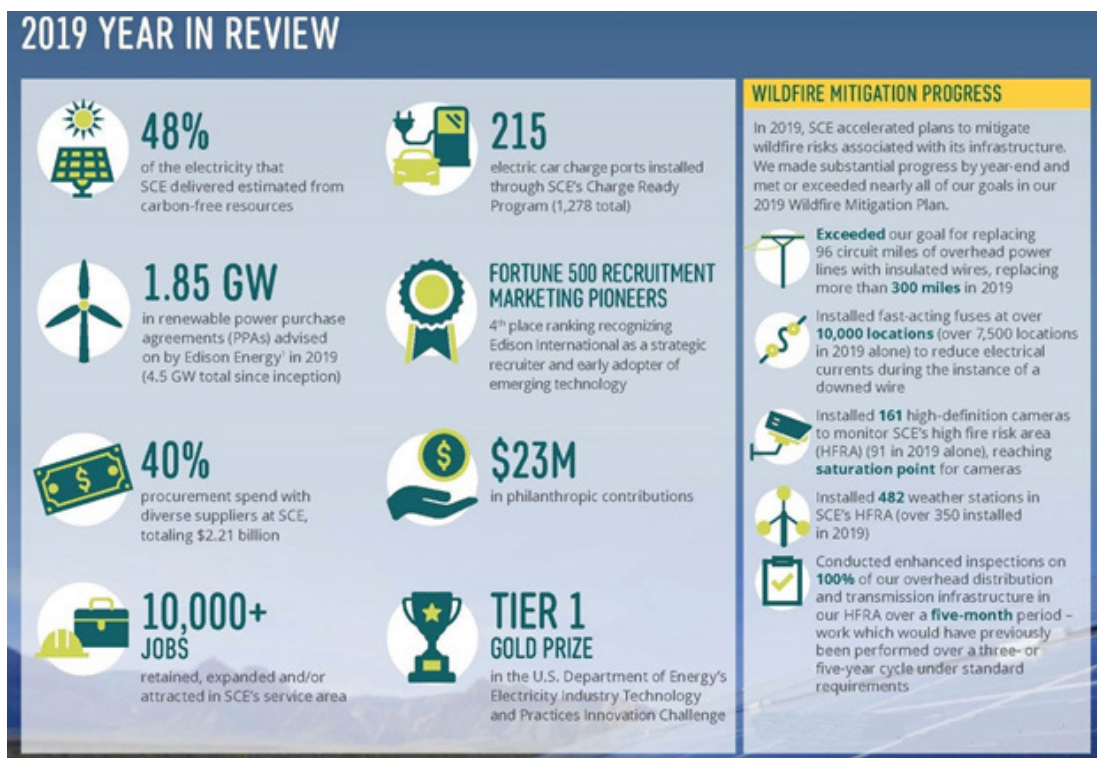
SCE won the U.S. Department of Energy's first Electricity Industry Technology and Practices Innovation Challenge Tier One Gold Prize for grid innovation. In May 2020, we also announced one of the largest energy storage procurements in the nation.

## Building Electrification

In addition to our clean energy and transportation electrification initiatives, we provide services for customers to reduce their energy use and thus minimize the environmental footprint of their homes and businesses.

For example, SCE's Foodservice Technology Center (FTC) in Irwindale, CA, features a one-of-a-kind demonstration kitchen with free workshops on kitchen lighting, all-electric induction cooking, and other energy-saving technologies. In 2019, the FTC rolled out its first Table Top Induction Range Lending Program for customers to borrow and test equipment. To learn more about the FTC, visit [sce.com/ftc](https://sce.com/ftc).

For more information about SCE's sustainability work, read the full [2019 report](#).



<sup>1</sup> Edison Energy is not the same company as Southern California Edison, the utility, and Edison Energy is not regulated by the California Public Utilities Commission.

## Additional SCE Sustainability Highlights

### Clean Energy:

- **Pathway 2045**, released in November 2019, is SCE's blueprint for how California can affordably achieve economy-wide carbon neutrality by 2045.
- An estimated 48 percent of the electricity we delivered to customers in 2019 came from carbon-free sources. Of that, an estimated 73 percent (35 percent of total delivered power) came from renewable resources eligible under California's Renewable Portfolio Standard (RPS) requirements.

- In 2019, SCE was named a leader in solar by the Smart Electric Power Alliance (SEPA), for the 12th consecutive year. We were also named as the top electric utility for the second year in a row for annual storage capacity.
- We already have exceeded our 2024 state-mandated target of 580 MW of energy storage. As of March 1, 2020, we have procured or installed over 690 MW of energy storage, approximately 600 MW of which counts toward state targets.
- On May 1, 2020, we announced we have signed seven contracts totaling 770 MW of battery-based energy storage resources to help enhance electric system reliability needs in our service area. To date, this is one of the largest energy storage procurements in the nation.

**Transportation Electrification:**

- We have seen tremendous growth in the number of electric vehicles (EVs) in our service area over the last five years. In 2015, there were 58,700 EVs registered. In 2019, that number grew to over 210,000.
- Since the successful launch of our Charge Ready program in 2016, we have expanded the program to support up to 2,700 charging ports for light-duty vehicles.
- At year-end 2019, we had installed 1,278 charge ports at 83 sites. We are awaiting approval on a new program to install an additional 48,000 charge ports across our service area.
- In 2019, we launched Charge Ready Transport to install infrastructure to support medium- and heavy-duty vehicles at up to 870 sites. This is the largest truck and transit initiative in the nation.
- We completed the Charge Ready Transit Bus pilot in 2019, providing bus charging infrastructure to support up to 30 charge ports at three transit agencies in the region.

## A Message From Edison International Senior Leadership

*(This note was sent to the teams across Edison International, Southern California Edison, and Edison Energy, LLC, on Friday, May 29. We stand with the African American community, and will not waiver in living our values now and always.)*

The recent deaths of George Floyd, Breonna Taylor, and Ahmaud Arbery have shaken many of us to the core. First and foremost, to our African American colleagues, families and friends, and the many people who are hurting: we all hurt with you. On behalf of the senior leadership team, please know that we are right here by your side.

Sadly, this is not new, but we must never get used to it or become numb to it. Racism and related acts of violence are something none of us should tolerate. Racism hurts in numerous ways, including ways many may not know or think about. These are issues that impact each of us as individuals, regardless of our race or ethnicity. These are also issues that impact our company and we must always remain committed to living our values and nurturing a diverse and inclusive environment.

Please continue to think about your family and friends, your neighbors, your sisters and brothers at Edison, and even the impacted people you don't know. We have a shared responsibility to keep each other safe and we must stay together, through this crisis and always.

Pedro J. Pizarro  
President and CEO  
Edison International