



SOUTHERN CALIFORNIA  
**EDISON**<sup>®</sup>

6040 N. Irwindale Ave., Bldg. A  
Irwindale, CA 91702

An EDISON INTERNATIONAL<sup>®</sup> Company



Contact your account representative for additional information and assistance.

#### QUICK LINKS TO FIND ENERGY INFO

##### SCE Home Page

– [www.sce.com](http://www.sce.com)

##### Energy-Related Learning

– [www.sce.com/ctac](http://www.sce.com/ctac)  
– [www.sce.com/agtac](http://www.sce.com/agtac)

##### Statewide Transmission System Status

– [www.caiso.com](http://www.caiso.com)

##### Utility Regulation

– [www.cpuc.ca.gov](http://www.cpuc.ca.gov)  
– [www.energy.ca.gov](http://www.energy.ca.gov)

### IN THIS ISSUE ...

- » Learn, Prepare, Act: More on SCE's Energy Management Solutions Resources
- » Uncover Hidden Savings in Your Buildings
- » Summer Power Supply Outlook: What's New for 2010
- » Don't Miss Out on Spring Electricity Outlook Meetings

SOUTHERN CALIFORNIA EDISON

# POWER BULLETIN

VOL. 10 No.4 April 2010

## Learn, Prepare, Act: More on SCE's Energy Management Solutions Resources

Southern California Edison's (SCE) redesigned web pages that feature the new industry-specific Energy Management Solutions Guides and 2010 Incentives Application (see the March 2010 Power Bulletin for details) also provide a single source of information for you to **Learn, Prepare** and **Act** on your energy management needs.

Start by choosing one of seven business types at [www.sce.com/solutions](http://www.sce.com/solutions): office, small business, water and wastewater, manufacturing and warehousing, retail, agriculture and food processing, and government and institutions. From there:

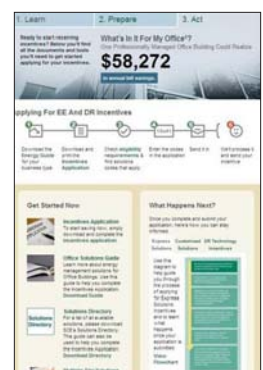
- **Learn:** Find energy consumption information by type of use (for example, lighting, HVAC and refrigeration), tips to start saving energy, and applicable energy efficiency and demand response solutions.
- **Prepare:** Take an online audit and find a contractor who can help with your energy management projects through SCE's contractor directory. Also link to the Express Solutions (formerly Express Efficiency Program) and Customized Solutions (formerly Standard Performance Contract Program) web pages.
- **Act:** Go to the "Get Started Now" box, and find all you need to know to apply for incentives and act now to save energy and money.

### Additional Resources

Still want to learn more? Go to [www.sce.com/solutions](http://www.sce.com/solutions) and look under "Other Options and Resources" to find information on:

- Resources and Online Tools: Training and tools available to help with your energy management needs
- Regulation & Compliance Support: Information about greenhouse gas emissions and energy performance benchmarking
- Renewables & Customer Generation: Details on solar power and self-generation
- Specialized Services for New and Existing Buildings: Additional technical assistance and energy solutions for qualified buildings

Navigate these web pages for additional information or contact your account representative.



SCE now provides a one-stop online resource for various types of customers to **Learn, Prepare** and **Act** on your energy management needs.

CONTINUED ON BACK

CONTINUED FROM FRONT

## Uncover Hidden Savings in Your Buildings

SCE's new Energy Management Solutions web pages offer plenty of tips to save energy and money. Uncover these hidden savings by visiting our website; in the meantime, follow these recommendations\* to lower your bill and improve your bottom line.

### Lighting

- Use more task lighting and less ambient lighting in offices. Task lights illuminate the work surface but not the entire area, putting the light where it's needed most and providing savings on general area lighting costs.
- Post simple reminder signs to turn off lights when they're not in use or when daylight is sufficient.
- Remove dust from lamps and fixtures (including reflectors, diffusers, lenses and louvers) for maximum light output. For fixtures cleaned every 18 months, dirt buildup can reduce light output by up to 10% between cleanings.
- Use screw-in compact fluorescent lamps (CFLs) in place of as many incandescent lamps as possible. CFLs provide the same amount of light as incandescent lamps, but use only about 25% of the energy and last six to 10 times longer.
- Replace T12 lamps with high-performance T8 fluorescent lamps and electronic ballasts to obtain the same lighting levels, with energy and demand savings of 10% to 40%.
- Use occupancy sensors in spaces people pass in and out of often, like storage areas, conference and break rooms, and restrooms, and achieve potential savings ranging from approximately 20% to 80%.
- Replace incandescent or fluorescent lamp exit signs with LED (light-emitting diode) exit signs, which use 5 watts of power compared to fluorescents and incandescents that use 9 watts to 40 watts to illuminate the signs.

### HVAC

- Control thermostat settings, since every degree of cooling can increase energy use by 2% to 3%.
- Use a programmable thermostat to automatically control heating or air conditioning during non-occupancy times. Proper usage of a programmable thermostat can cut a business' cooling costs 15% to 25% and heating costs by approximately 25%.
- Regularly maintain and clean your HVAC system—including cleaning condenser coils, cleaning or replacing filters, checking for leaking ducts and sealing them, and ensuring the economizer operates properly—to keep it running efficiently. This can save up to 30% of fan energy and 10% of space conditioning energy.

### Additional Equipment

- Turn off equipment at night and for long stretches during the day when it's not in use. Copiers, laser printers, faxes and other office equipment can save up to 66% of their 24-hour power consumption if on only during office hours.
- Install occupancy sensor controls on vending machines, so the machines are only on when customers are present or when the compressor must run to maintain the product at the desired temperature. This can result in average electricity savings of about 46%.

For more energy-saving tips, and information on available incentives, contact your account representative or visit [www.sce.com/solutions](http://www.sce.com/solutions).

\* Source of data: "Electricity Use Assessment Guide for Small Office Buildings," Southern California Edison.

### Did You Know?

- A 10% reduction in energy costs in retail operations can boost net profit margins by as much as 1.55% and sales per square foot by \$25 (source: ENERGY STAR®, [www.energystar.gov/index.cfm?c=retail.bus\\_retail](http://www.energystar.gov/index.cfm?c=retail.bus_retail)).
- Comprehensive energy solutions can reduce office building utility bills by 30% (source: Flex Your Power-Commercial Sector, [www.fypower.org/com/](http://www.fypower.org/com/)).
- New technologies for motor systems alone can reduce manufacturing and warehousing facilities' energy use by as much as 18% in California (Source: Flex Your Power, [www.fypower.org/](http://www.fypower.org/)).

## Summer Power Supply Outlook: What's New for 2010

SCE anticipates sufficient power supplies for this summer given available resources and lower demand due to current economic conditions. However, with the National Oceanic and Atmospheric Administration predicting a warmer-than-normal summer, and the potential for unexpected emergencies, like fires, to impact the delivery of electricity, SCE encourages you to take advantage of our energy efficiency and demand response solutions.

These solutions provide financial incentives and/or other benefits to help you reduce power use—in particular, demand response is designed to assist you during peak-demand times—plus improve your bottom line, help maintain reliable electricity supplies in our communities, and enhance the environment.

Besides helping you tap into energy-saving opportunities, SCE continues to aggressively pursue the addition of new renewable generation resources to our power supply mix while building a smarter, cleaner, more efficient electricity grid. In 2009 SCE procured more than 13.6 billion kilowatt-hours (kWh) of renewable energy, an increase of over 1.0 billion kWh from 2008. SCE currently leads the nation in renewable energy purchases.

In addition, SCE continues to work with winning bidders that were selected in 2007 and 2008 in two tracks of a competitive solicitation program designed to attract new power generation facilities to help serve the region's power needs and further enhance reliability.

One of the projects selected, a new 67-mile transmission line connecting a 490-megawatt combined-cycle natural gas facility in Blythe, Calif. (about 225 miles east of Los Angeles) to SCE's Julian Hinds Substation, is expected to go online this August.

For more information on how you can benefit from SCE's energy efficiency and demand response solutions, contact your account representative or visit [www.sce.com/solutions](http://www.sce.com/solutions). To learn more about SCE's renewable energy portfolio, log onto [www.sce.com/PowerandEnvironment/Renewables](http://www.sce.com/PowerandEnvironment/Renewables).

## Don't Miss Out on Spring Electricity Outlook Meetings

There's still time to sign up for one of SCE's Spring 2010 Electricity Outlook sessions, where you will learn more about electric utility issues, with a special emphasis on 2010 changes for rates, demand response programs and Direct Access. Each session takes place from 8 a.m. to 9:30 a.m., with continental breakfast from 7:30 a.m. to 8 a.m. The schedule is:

Date	Event#	Location	Address
April 20, 2010	25707	San Bernardino Hilton	285 E. Hospitality Lane, San Bernardino
April 22, 2010	25708	SCE's Agricultural Technology Application Center	4175 South Laspina, Tulare
April 23, 2010	25559	SCE's Customer Technology Application Center	6090 N. Irwindale Ave., Irwindale
April 27, 2010	25709	Hilton Costa Mesa	3050 Bristol St., Costa Mesa
May 7, 2010	25711	Oxnard Marriott	600 E. Esplanade Drive, Oxnard
May 11, 2010	25710	Torrance Marriott	3635 Fashion Way, Torrance

Customers also can choose to join an Electricity Outlook Webinar on April 23, 2010, from 8 a.m. to 9:30 a.m. (event #25712). To register for any of these sessions, call 626.812.7537 or 800.336.2822, extension 42537.



An EDISON INTERNATIONAL® Company