

Tehachapi Renewable Transmission Project

PROJECT AT-A-GLANCE

The Tehachapi Project is a series of new and upgraded transmission facilities, spanning approximately 173 miles, to deliver electricity from renewable wind energy generators as well as power added to the system from traditional generating sources, in Kern County south through Los Angeles County and east to the existing Mira Loma Substation in Ontario, San Bernardino County.



500 kV underground duct bank.



500 kV underground vault pad.

Safety Corner

STAY SAFE DURING A STORM



Our crews are ready and prepared to safely restore your power, but it may take several hours depending on the severity of damage that's occurred.

If a power outage is affecting your home or community, keep an eye on safety and be extra cautious.

- Call SCE to report the outage at 1-800-611-1911 or report it online at www.sce.com/outage. Reporting it online will also allow you to get updates via text, e-mail, or phone as they happen.

How You Can Prepare Before a Storm

- Clear rain gutters & outdoor drains
- Learn how to reset circuit breakers
- Check with your local city or county for sandbags

Learn more about how to prepare your home and your family at www.sce.com/safety

SCE in Your Community

SUPPORTING DIVERSE COMMUNITIES



Our commitment includes supporting businesses owned by women, minorities, and disabled veterans. We've demonstrated this for more than 30 years through our supplier diversity efforts. In that time, we've spent more than \$9 billion with these "diverse business enterprises" (DBEs) – and became the first electric-only utility to achieve more than \$1 billion in annual spending with DBEs.

For more information visit www.sce.com/community

GETTING READY TO GO GREEN: UPCOMING CONSTRUCTION ACTIVITIES

Project Update – Southern California Edison (SCE) contractors are continuing construction-related activities along portions of the Tehachapi Renewable Transmission Project (TRTP). Upon completion, the project will provide added capacity to deliver enough power from renewable and other generators to power three million homes, helping enhance electricity reliability in the region and help meet California's renewable energy goals.

During the next three months, TRTP construction activities will include: (please note that the construction schedule is tentative and may change depending on weather and other factors).

Ontario:

- **Lower telecom and sub-transmission (66 kV) on pole line, and underground distribution (12 kV):** Archibald Ave, Schaeffer Ave, Bon View Ave, Walker Ave
- **Site restoration:** along the project route from east of Central Ave in Chino to the Mira Loma Substation in Ontario

Chino:

- **Remove wooden distribution poles:** north side of Edison Ave, between Central Ave and Oaks Ave

TRTP 500kV Underground Project in Chino Hills and a Portion of Chino:

- **Clearing of vegetation and any impeding structures:** within the project area
- **Grading operations for access roads and pads:** requiring use of large construction equipment
- **Horizontal Directional Drilling:** from south of Prairieview Cir (west of Lost Trail Dr) to south of Garden Ct (west of Cork Dr) underground project route
- **Installation of underground cable:** which will include the use of cranes, semi-trailers, temporary lane closures, and temporary parking restrictions throughout the underground project route
- **Installation of two transition stations:** enabling wires to go from overhead towers to underground conduits; each station will be approximately three acres in sized, enclosed by an 8-foot perimeter wall with some equipment approximately 133 feet in height
- **Use of large construction equipment, including cranes and project vehicles:** throughout the project route
- **Periods of temporary lane closures and traffic:** throughout the project route
- **Site restoration:** along the project route from west of Canon Lane to Pipeline Avenue in Chino Hills

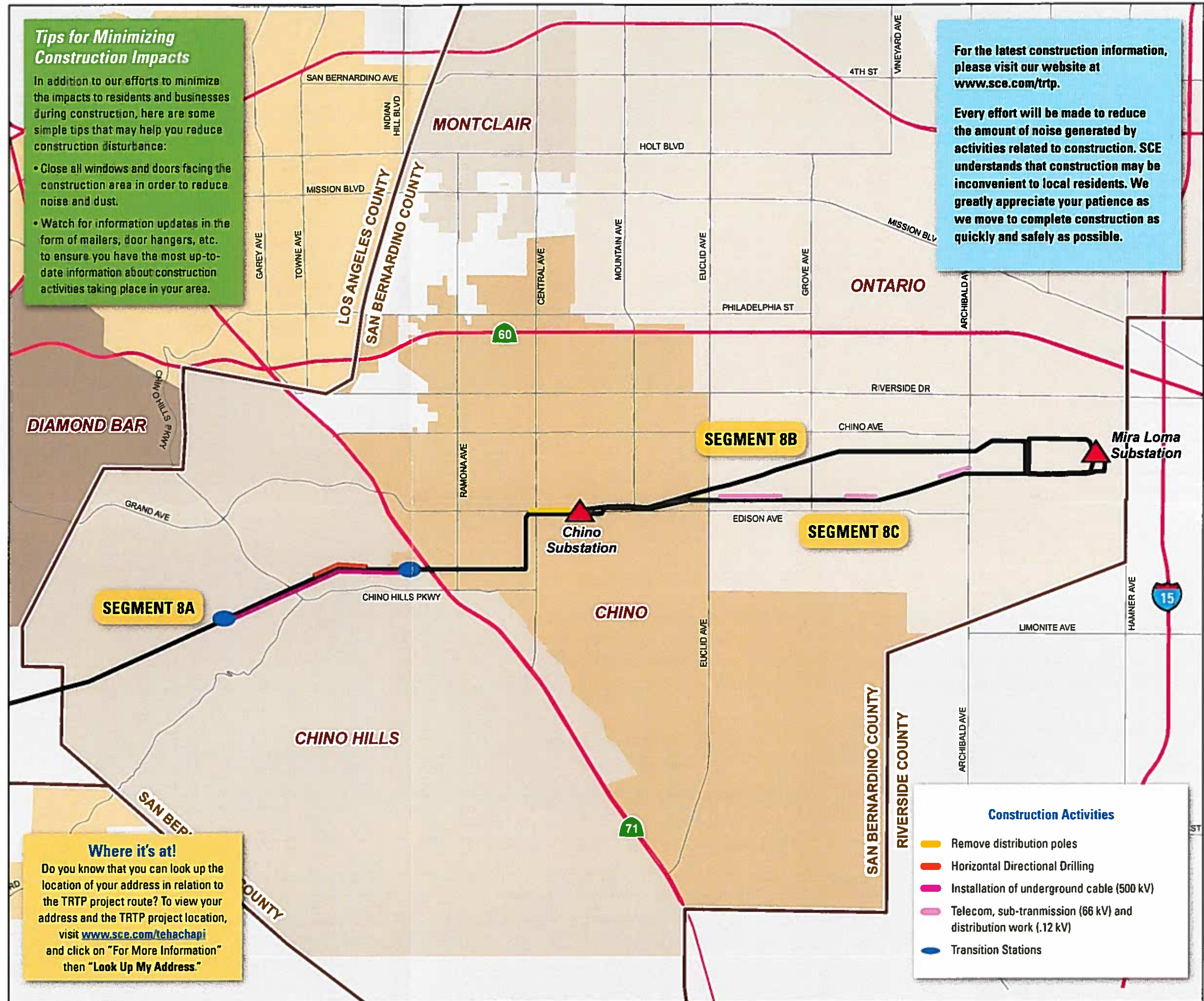
Tips for Minimizing Construction Impacts

In addition to our efforts to minimize the impacts to residents and businesses during construction, here are some simple tips that may help you reduce construction disturbance:

- Close all windows and doors facing the construction area in order to reduce noise and dust.
- Watch for information updates in the form of mailers, door hangers, etc. to ensure you have the most up-to-date information about construction activities taking place in your area.

For the latest construction information, please visit our website at www.sce.com/trtp.

Every effort will be made to reduce the amount of noise generated by activities related to construction. SCE understands that construction may be inconvenient to local residents. We greatly appreciate your patience as we move to complete construction as quickly and safely as possible.



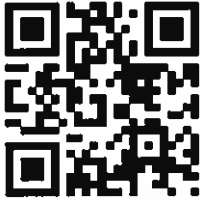


2244 Walnut Grove Ave.
G01, 464C
Rosemead, CA 91770

For More Information

Project Website:

www.sce.com/tehachapi



SCE's 24-hour toll-free line:
(877) 795-8787

Email:

www.sce.com/tehachapi

Make sure to like us on Facebook and follow us on Twitter to get energy efficiency tips, breaking news and crucial safety information.

www.facebook.com/sce

and our Twitter feed is @SCE

For More Information

Project Website: www.sce.com/tehachapi

SCE's 24-hour toll-free line: (877) 795-8787

Email: www.sce.com/tehachapi

Contact information during standard business hours:

Chino and Chino Hills

Adriana Mendoza (909) 930-8495

Adriana.Mendoza@sce.com

Ontario

Jeremy Goldman (951) 249-8466

Jeremy.Goldman@scce.com

Emergency number:

For construction-related emergencies, please call the SCE emergency line at (800) 611-1911

If you would like to receive future newsletter updates via e-mail, please e-mail us at

www.sce.com/tehachapi

and enter "Newsletter" in the e-mail's subject line.

Como Ponerse en Contacto con Nosotros

Para obtener información acerca del proyecto de infraestructura Tehachapi Renewable Transmission Project, por favor visite www.sce.com/trtp. También puede enviar un correo electrónico a trtp@sce.com o

llamar a nuestra línea de información gratuita al (877) 795-8787.