

## NOTICE OF CONSTRUCTION

### Southern California Edison West of Devers (WOD) Upgrade Project Activity

The WOD Project will upgrade existing transmission lines between the Devers, El Casco, San Bernardino, and Vista substations to increase system transfer capacity from 1,600 megawatts (MW) to 4,800 MW. Upon completion, the WOD Upgrade Project will bring renewable and conventional generation to the power grid and help meet California's renewable energy goals.

**Transmission and Telecommunication Improvements: June 2018 – December 2022 – Most work activities will occur Monday through Saturday from 6:00 a.m. to 7:00 p.m. Occasionally, as project conditions require, work may occur on Sundays and overnight.**

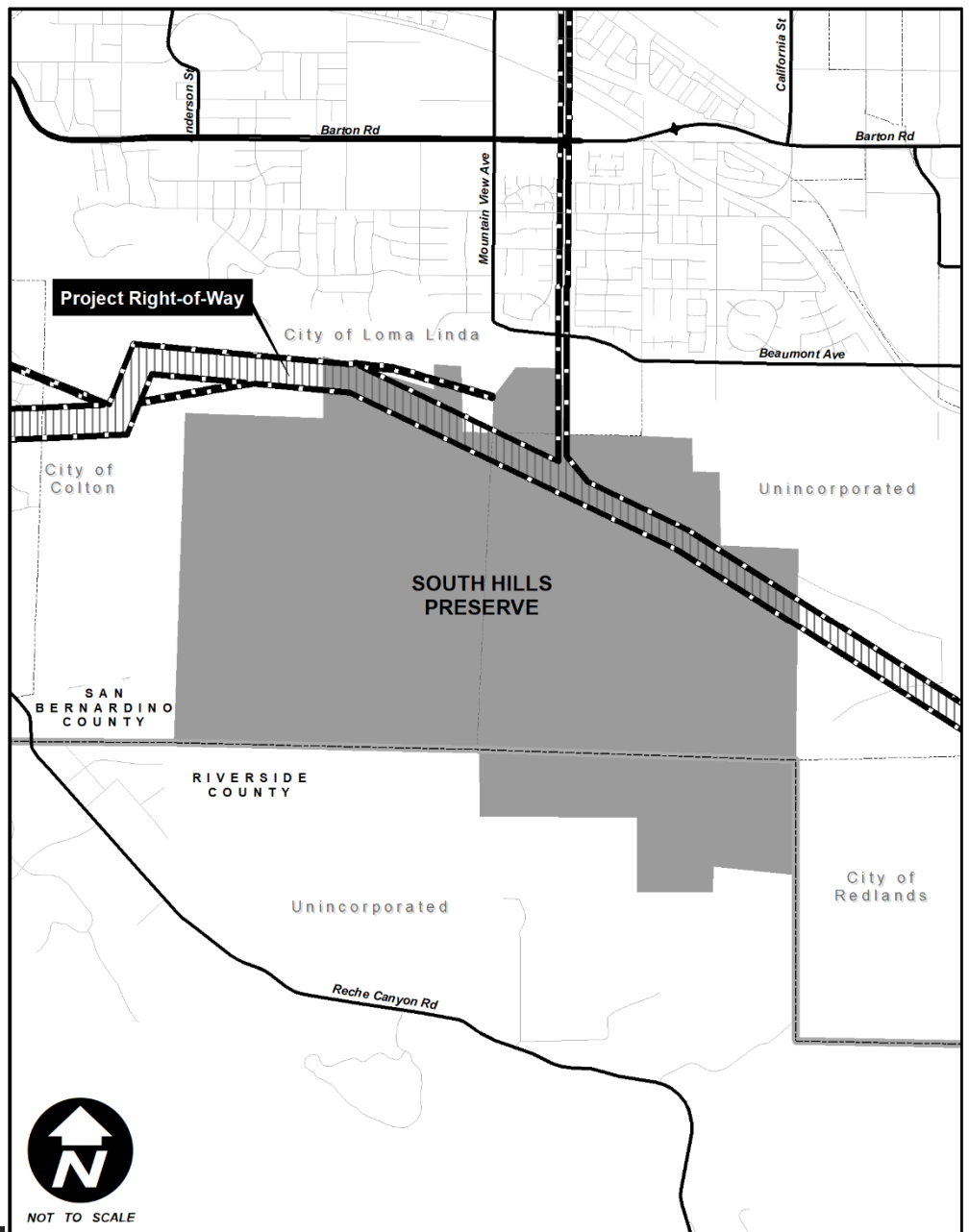
**Locations Scheduled for Transmission and Telecommunications Improvements in and around The South Hills Preserve in the City of Loma Linda and Unincorporated San Bernardino County: June 2018 through December 2022** Within the Project Right-of-Way, south of Mountain View Avenue and Beaumont Avenue

### Scheduled Activities:

- Site preparation
- Removal and replacement of overhead lines
- Modification, installation and removal of poles and towers
- Foundation installation
- Counterpoise installation
- Shoo Fly installation and removal
- Helicopter operations
- Wire Stringing
- Transmission wire and optical ground wire pulling and splicing
- Restoration activities

Impacts to Recreation Areas: for your safety construction may limit access to trails within the project right-of-way, please comply with signage and directions given by construction personnel

**Every effort will be made** to reduce the amount of noise generated by activities related to construction. SCE understands that construction may be inconvenient to residents, businesses, and visitors. We greatly appreciate your patience as we move to complete construction as quickly and safely as possible.



## Questions? / ¿Preguntas?

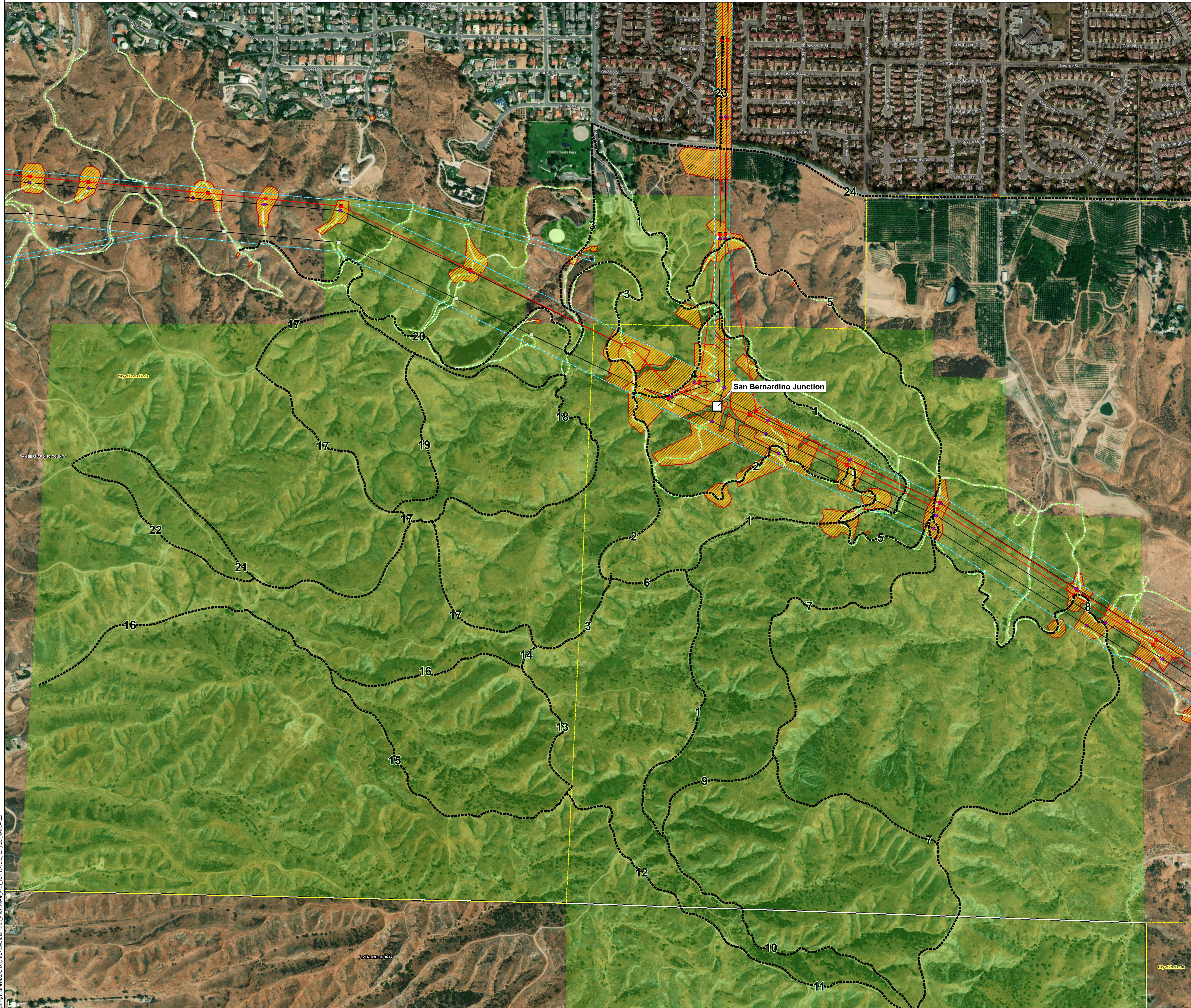
Call our toll-free line 888-226-9916, where your call will be routed to effectively resolve your concern.

Project Liaison: Debrah Bishop

Para información en español, llame al 888-226-9916

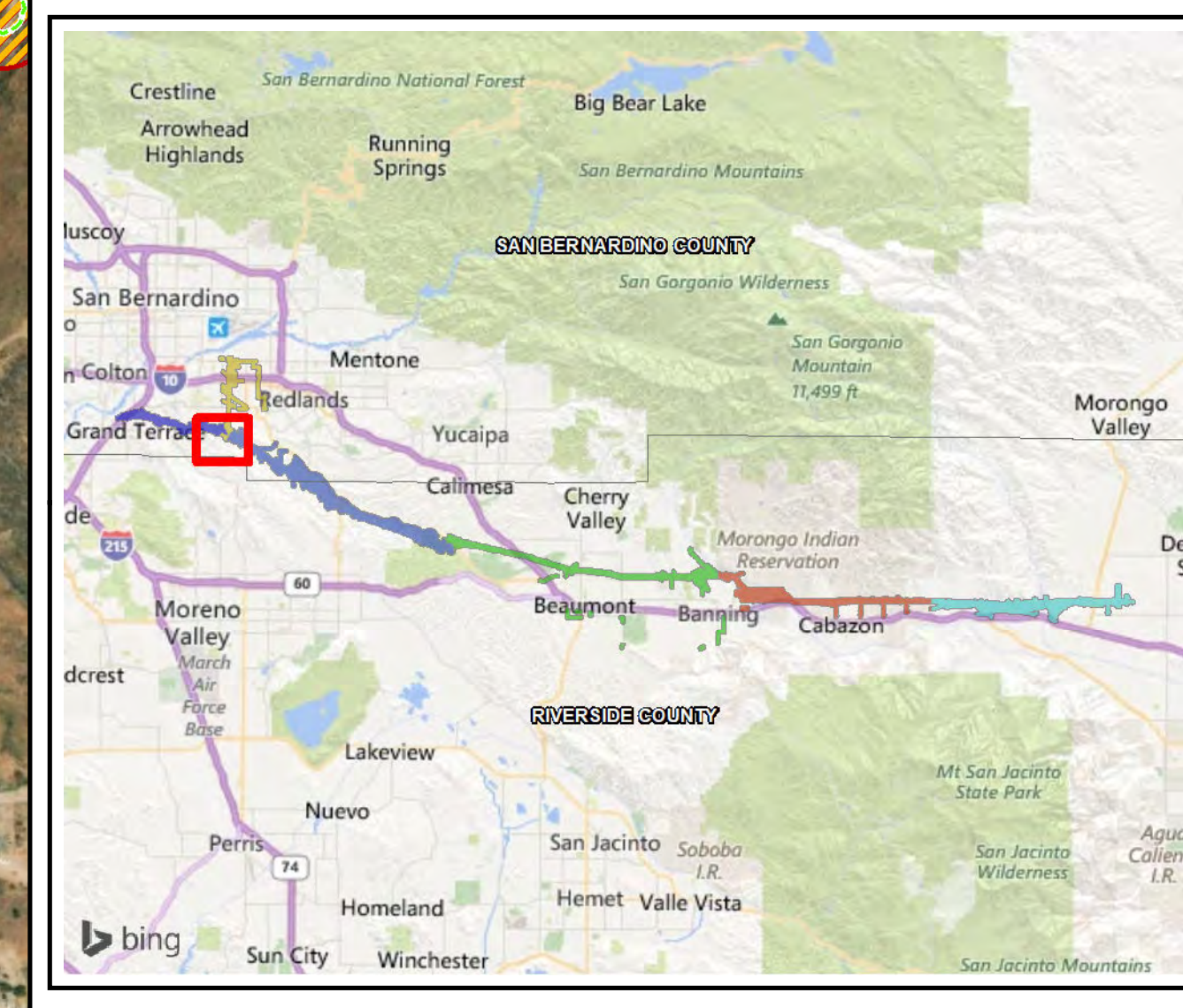
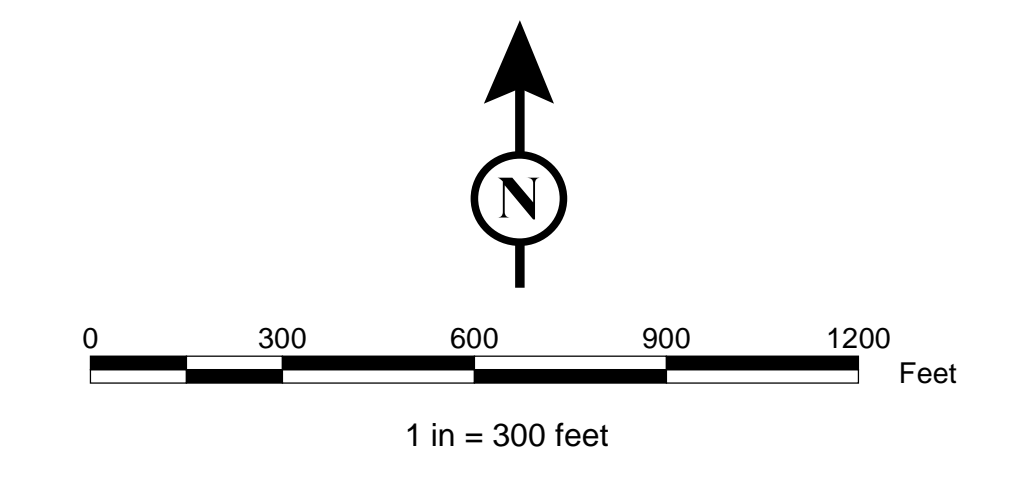
Visit our Project website [www.on.sce.com/devers](http://www.on.sce.com/devers)





- Legend**
- San Bernardino Junction
  - SCE Right of Way
  - Major Transmission Line Structures**
  - Proposed 220 kV Structure (New)
  - Transmission Structure (Modify)
  - Transmission Structure (Remove)
  - Transmission Structure (Existing)
  - New 220 kV Transmission Line
  - Existing 220 kV Transmission Line
  - Approved Construction Access Road
  - ▨ Approved Construction Work Area
  - City Boundary
  - County Boundary
  - South Hills Preserve
  - South Hills Preserve Trail
  - Trail Names**
  - 1 - Scott Canyon
  - 2 - Scott Ridge
  - 3 - Razor Ridge
  - 4 - Barberry Ridge
  - 5 - Beaumont Ridge
  - 6 - Jeep Hill
  - 7 - West Ridge
  - 8 - East Ridge
  - 9 - The Cliff Cut-Off
  - 10 - Jedi
  - 11 - Shot Gun Ridge
  - 12 - Wall
  - 13 - Dragon Back
  - 14 - Razor Back
  - 15 - Fault View
  - 16 - Scotch Lane Trail
  - 17 - Loma Linda Ridge Run
  - 18 - Coal Mine
  - 19 - Traverse Trail
  - 20 - City View Ridge
  - 21 - Hidden Valley Canyon
  - 22 - Hidden Valley Ridge
  - 23 - SCE Easement Trail
  - 24 - Lillian V. Miller Memorial Trail

**Notes:**  
 Construction east of the San Bernardino Junction is scheduled to begin in February 2019. Construction west of the San Bernardino Junction is scheduled to begin in March 2019.



**Southern California Edison  
 West of Devers Upgrade Project**

*South Hills Preserve Trails*