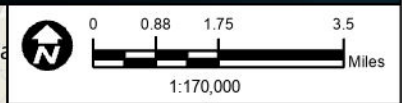
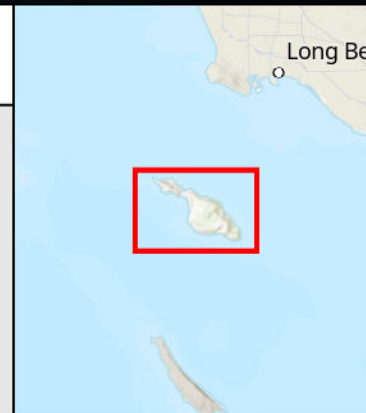




## Overview Map 1

○ Sites



Date: 6/27/2025  
 File Name: Water/Facilities.aprx  
 Version #: 1  
**Geospatial Analysis**  
 Geomatics | Design and Field Asset Services

Features depicted herein are planning level accuracy, and intended for informational purposes only. Distances and locations may be distorted at this scale. Always consult with the proper legal documents or agencies regarding such features.

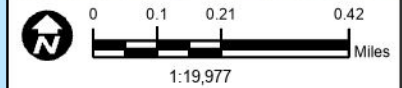
Layer Credits: Hybrid Reference Layer: Sources: Esri, TomTom, Garmin, FAO, NOAA, USGS, (c) OpenStreetMap contributors, and the GIS User Community  
 World Imagery: Earthstar Geographics  
 World Topographic Map: Sources: Esri, TomTom, Garmin, FAO, NOAA, USGS, (c) OpenStreetMap contributors, and the GIS User Community  
 World Hillshade: Esri, USGS





## Overview Map 2

○ Sites



Date: 6/27/2025  
 File Name: WaterFacilities.aprx  
 Version #: 1  
**Geospatial Analysis**  
 Geomatics | Design and Field Asset Services

Features depicted herein are planning level accuracy, and intended for informational purposes only. Distances and locations may be distorted at this scale. Always consult with the proper legal documents or agencies regarding such features.

Layer Credits: Hybrid Reference Layer: Sources: Esri, TomTom, Garmin, FAO, NOAA, USGS, (c) OpenStreetMap contributors, and the GIS User Community  
 World Topographic Map: Sources: Esri, TomTom, Garmin, FAO, NOAA, USGS, (c) OpenStreetMap contributors, and the GIS User Community  
 World Imagery: Maxar  
 World Hillshade: Esri, NASA, NGA, USGS



AN EDISON INTERVENTION™ COMPANY



**SCE Owner; APN: 7480-001-800**

**Golf Course Well (0.23 acres)**

- SCE Parcel
- Parcels



Date: 7/1/2025  
 File Name: Water/Facilities.aprx  
 Version #: 1  
**Geospatial Analysis**  
 Geomatics | Design and Field Asset Services

Features depicted herein are planning level accuracy, and intended for informational purposes only. Distances and locations may be distorted at this scale. Always consult with the proper legal documents or agencies regarding such features.

Layer Credits: World Topographic Map: Sources: Esri, TomTom, Garmin, FAO, NOAA, USGS, (c) OpenStreetMap contributors, and the GIS User Community  
 World Hillshade: Sources: Esri, Maxar, Airbus DS, USGS, NGA, NAGA, CGIAR, N Robinson, NDEAB, NLS, OD, NANA, Geodataspyresen, Rijswaterstaat, GSA, Geoland, FEMA, Intermap, and the GIS user community  
 World Imagery: Maxar

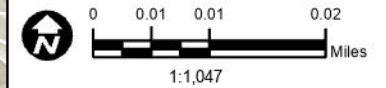




**SCE Owner; APN: 7480-001-802, 7480-001-801**

**Falls Canyon Dam (0.09 acres) & Baker Tanks (2.13 acres)**

- SCE Parcel
- Parcels



Date: 7/1/2025  
 File Name: WaterFacilities.aprx  
 Version #: 1  
**Geospatial Analysis**  
 Geomatics | Design and Field Asset Services

Features depicted herein are planning level accuracy, and intended for informational purposes only. Distances and locations may be distorted at this scale. Always consult with the proper legal documents or agencies regarding such features.

Layer Credits: World Topographic Map: Sources: Esri, TomTom, Garmin, FAO, NOAA, USGS, (c) OpenStreetMap contributors, and the GIS User Community  
 World Hillshade: Esri, NASA, NGA, USGS, FEMA  
 World Imagery: Maxar



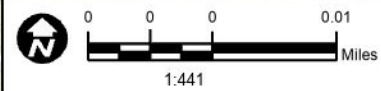
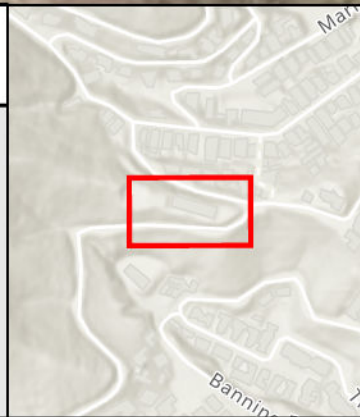
Site 4



**SCE Owner; APN: 7480-029-800**

**Whitley Reservoir (0.56 acres)**

- SCE Parcel
- Parcels



Date: 7/1/2025  
 File Name: Water/Facilities.aprx  
 Version #: 1  
**Geospatial Analysis**  
 Geomatics | Design and Field Asset Services

Features depicted herein are planning level accuracy, and intended for informational purposes only. Distances and locations may be distorted at this scale. Always consult with the proper legal documents or agencies regarding such features.

Layer Credits: World Topographic Map: Sources: Esri, TomTom, Garmin, FGO, NOAA, USGS, (c) OpenStreetMap contributors, and the GIS User Community  
 World Hillshade: Sources: Esri, Maxar, Airbus DS, USGS, NGA, NGA, CGIAR, N Robinson, NCEAS, NLS, OD, NIMA, Geodatastyresen, Rijswaterstaat, GSA, Geoint, FEMA, Intermap, and the GIS user community  
 World Imagery: Maxar

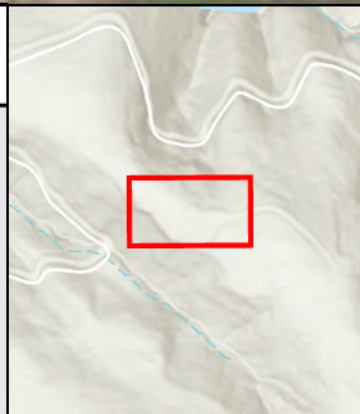




**SCE Owner; APN: 7480-040-801**

**Million Gallon Tank (0.55 acres)**

- SCE Parcel
- Parcels



Date: 7/1/2025  
 File Name: Water/Facilities.aprx  
 Version #: 1  
**Geospatial Analysis**  
 Geomatics | Design and Field Asset Services

Features depicted herein are planning level accuracy, and intended for informational purposes only. Distances and locations may be distorted at this scale. Always consult with the proper legal documents or agencies regarding such features.

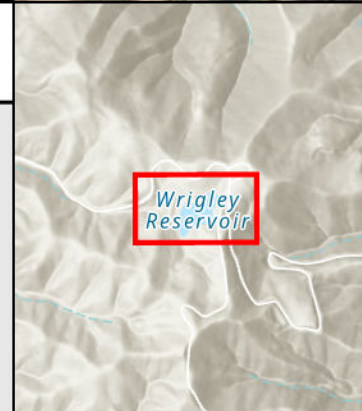
Layer Credits: World Topographic Map: Sources: Esri, TomTom, Garmin, FAO, NOAA, USGS, (c) OpenStreetMap contributors, and the GIS User Community  
 World Hillshade: Esri, NASA, NGA, USGS, FEMA  
 World Imagery: Maxar





**SCE Owner; APN: 7480-042-801, 7480-042-800 Wrigley Reservoir (2.13 + 1.85 acres)**

- Water Bodies
- SCE Parcel
- Parcels



Date: 7/1/2025  
 File Name: WaterFacilities.aprx  
 Version #: 1  
**Geospatial Analysis**  
 Geomatics | Design and Field Asset Services

Features depicted herein are planning level accuracy, and intended for informational purposes only. Distances and locations may be distorted at this scale. Always consult with the proper legal documents or agencies regarding such features.

Layer Credits: World Topographic Map: Sources: Esri, TomTom, Garmin, FAO, NOAA, USGS, (c) OpenStreetMap contributors, and the GIS User Community  
 World Hillshade: Esri, NASA, NGA, USGS, FEMA  
 World Imagery: Maxar



An EDISON INTERNATIONAL™ Company

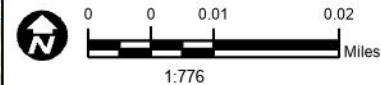
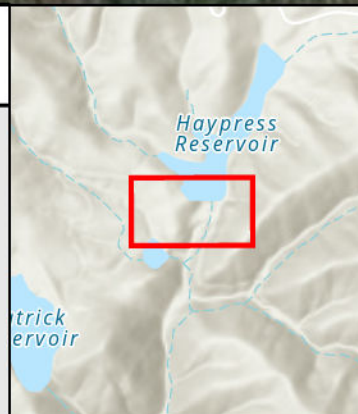
7480-042-058

7480-042-802

**SCE Owner; APN: 7480-042-802**

**Haypress Dam (1.54 acres)**

- Water Bodies
- SCE Parcel
- Parcels



Date: 7/1/2025  
 File Name: WaterFacilities.aprx  
 Version #: 1  
**Geospatial Analysis**  
 Geomatics | Design and Field Asset Services

Features depicted herein are planning level accuracy, and intended for informational purposes only. Distances and locations may be distorted at this scale. Always consult with the proper legal documents or agencies regarding such features.

Layer Credits: World Topographic Map: Sources: Esri, TomTom, Garmin, FAO, NOAA, USGS, (c) OpenStreetMap contributors, and the GIS User Community  
 World Hillshade: Esri, NASA, NGA, USGS, FEMA  
 World Imagery: Maxar

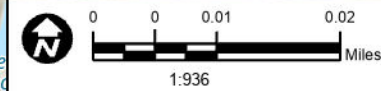
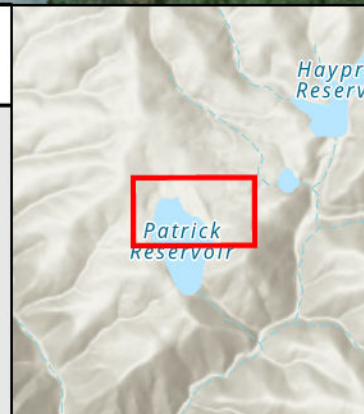




**SCE Owner; APN: 7480-042-803**

**Patrick Dam #2 (1.05 acres)**

- Water Bodies
- SCE Parcel
- Parcels



Date: 7/1/2025  
 File Name: WaterFacilities.aprx  
 Version #: 1  
**Geospatial Analysis**  
 Geomatics | Design and Field Asset Services

Features depicted herein are planning level accuracy, and intended for informational purposes only. Distances and locations may be distorted at this scale. Always consult with the proper legal documents or agencies regarding such features.

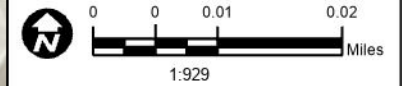
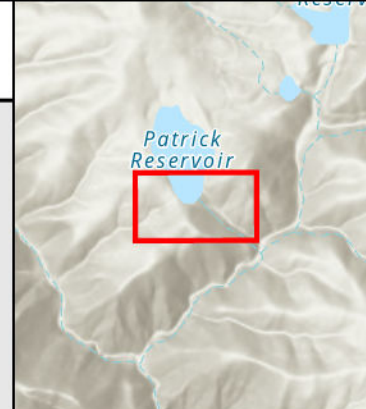
Layer Credits: World Topographic Map: Sources: Esri, TomTom, Garmin, FAO, NOAA, USGS, (c) OpenStreetMap contributors, and the GIS User Community  
 World Hillshade: Esri, NASA, NOAA, USGS, FEMA  
 World Imagery: Maxar



**SCE Owner; APN: 7480-042-804**

**Patrick Dam #1 (1.58 acres)**

- Water Bodies
- SCE Parcel
- Parcels



Date: 7/1/2025  
 File Name: WaterFacilities.aprx  
 Version #: 1  
**Geospatial Analysis**  
 Geomatics | Design and Field Asset Services

Features depicted herein are planning level accuracy, and intended for informational purposes only. Distances and locations may be distorted at this scale. Always consult with the proper legal documents or agencies regarding such features.

Layer Credits: World Topographic Map: Sources: Esri, TomTom, Garmin, FAO, NOAA, USGS, (c) OpenStreetMap contributors, and the GIS User Community  
 World Hillshade: Esri, NASA, NGA, USGS, FEMA  
 World Imagery: Maxar

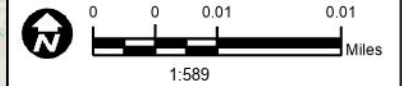




**SCE Owner; APN: 7480-042-805**

**Patrick Dam #3 (0.26 acres)**

- Water Bodies
- SCE Parcel
- Parcels



Date: 7/1/2025  
 File Name: WaterFacilities.aprx  
 Version #: 1  
**Geospatial Analysis**  
 Geomatics | Design and Field Asset Services

Features depicted herein are planning level accuracy, and intended for informational purposes only. Distances and locations may be distorted at this scale. Always consult with the proper legal documents or agencies regarding such features.

Layer Credits: World Topographic Map: Sources: Esri, TomTom, Garmin, FAO, NOAA, USGS, (c) OpenStreetMap contributors, and the GIS User Community  
 World Hillshade: Esri, NASA, NGA, USGS, FEMA  
 World Imagery: Maxar



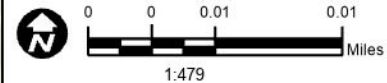
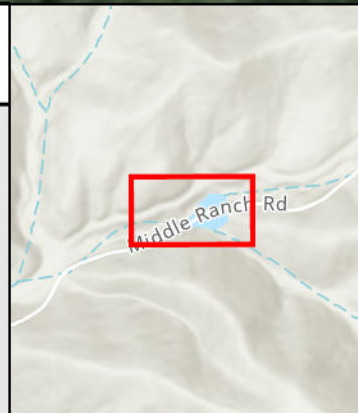
7480-042-023

7480-042-806

**SCE Owner; APN: 7480-042-806**

**Booster Station (0.09 acres)**

- Water Bodies
- SCE Parcel
- Parcels



Date: 7/1/2025  
 File Name: WaterFacilities.aprx  
 Version #: 1  
**Geospatial Analysis**  
 Geomatics | Design and Field Asset Services

Features depicted herein are planning level accuracy, and intended for informational purposes only. Distances and locations may be distorted at this scale. Always consult with the proper legal documents or agencies regarding such features.

Layer Credits: World Topographic Map: Sources: Esri, TomTom, Garmin, FAO, NOAA, USGS, (c) OpenStreetMap contributors, and the GIS User Community  
 World Hillshade: Sources: Esri, Maxar, Airbus DS, USGS, NGA, NAGA, CGIAR, N Robinson, NDEAB, NLS, OD, NIMA, Geodataspyresen, Rijswaterstaat, GSA, Geoland, FEMA, Intermap, and the GIS user community  
 World Imagery: Maxar

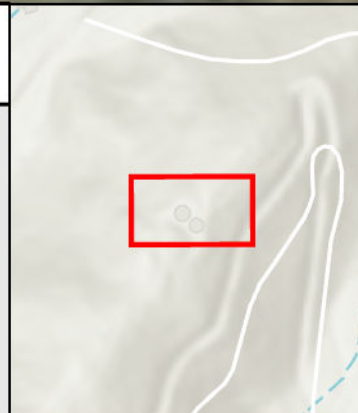




**SCE Owner; APN: 7480-042-807**

**Toyon Tanks (0.06 acres)**

- SCE Parcel
- Parcels



Date: 7/1/2025  
 File Name: Water/Facilities.aprx  
 Version #: 1  
**Geospatial Analysis**  
 Geomatics | Design and Field Asset Services

Features depicted herein are planning level accuracy, and intended for informational purposes only. Distances and locations may be distorted at this scale. Always consult with the proper legal documents or agencies regarding such features.

Layer Credits: World Topographic Map: Sources: Esri, TomTom, Garmin, FAO, NOAA, USGS, (c) OpenStreetMap contributors, and the GIS User Community  
 World Hillshade: Sources: Esri, Maxar, Airbus DS, USGS, NGA, NASA, CGIAR, N Robinson, NDEAB, NLS, OD, NIMA, Geodataspyresen, Rijswaterstaat, GSA, Geoland, FEMA, Intermap, and the GIS user community  
 World Imagery: Maxar



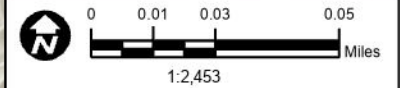
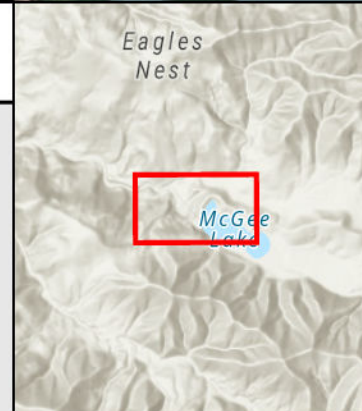
An EDISON INTERNATIONAL™ Company



**SCE Owner; APN: 7480-043-801**

**Thompson Dam (10.63 acres)**

- Water Bodies
- SCE Parcel
- Parcels



Date: 7/1/2025  
 File Name: Water/Facilities.aprx  
 Version #: 1  
**Geospatial Analysis**  
 Geomatics | Design and Field Asset Services

Features depicted herein are planning level accuracy, and intended for informational purposes only. Distances and locations may be distorted at this scale. Always consult with the proper legal documents or agencies regarding such features.

Layer Credits: World Topographic Map: Sources: Esri, TomTom, Garmin, FAO, NOAA, USGS, (c) OpenStreetMap contributors, and the GIS User Community  
 World Hillshade: Esri, NASA, NGA, USGS, FEMA  
 World Imagery: Maxar

